

# Mobile Monitor Operation Manual

Before use the mobile monitor, please confirm whether your mobile operating system and version is available, according to the following data sheet.

<b>Mobile System</b>	<b>Windows Mobile</b>	<b>Symbian</b>	<b>iPhone</b>	<b>Android</b>
<b>Version</b>	<b>Above window mobile 5.0</b>	<b>S60 V3.0 Or S60 V5.0.</b>	<b>All</b>	<b>Above 1.5, under 2.2</b>

*Note: 1.Different mobiles have different interfaces, there might be tiny differences.2. Default channel is Channel 1.*

## Contents

1 Enable the Mobile Monitor P2P.....	3
2 Operate the IP device according to your mobile operating system.....	5
2.1 iPhone system.....	5
2.2 Windows Mobile system.....	7
2.3 Symbian Operating system.....	11
2.4 Android Operating system.....	16

# 1 Enable the Mobile Monitor P2P.

## ■ Step 1 Set up P2P

Open the IP device via IE browser; enable the P2P under the following path  
Setting>>>>>Network Parameters>>>>>P2P

The screenshot shows the 'IP CAMERA' settings interface. The 'Settings' tab is active, and the 'Network Parameters' section is expanded to show the 'P2P' configuration. The 'Enable P2P' checkbox is checked. The 'Message port' is set to 4602, 'User name' is 'admin', 'Password' is masked with dots, and 'Network Transfer Stream' is set to '3rd-stream'. A red box highlights the 'Enable P2P' checkbox and the 'Message port' field. Below this, a larger view of the 'P2P' configuration is shown, with the 'Enable P2P' checkbox also highlighted by a red box.

**Message port:** This is the communication port between the IP device and Mobile, default=4602

**NOTE:** Please map the message port, or the mobile monitor will not be working.

**User name:** Default is admin, it is necessary when visit the IP device via mobile

**Password:** Default is admin, it is necessary when visit the IP device via mobile

**Network Transfer Stream:** 3rd-stream is default,

## ■ Step 2 Set Up Mobile Watching Stream

This is the IP device transfer stream when using mobile monitor.

Please kindly check the Mobile Watching Stream, or modify the parameters as the recommended in the picture. The Max. Bite Rate is adjustable if you want high image quality.

The screenshot shows a web-based configuration interface for a device. At the top, there are tabs for 'Real-time', 'Replay', and 'Settings'. Below this, there are sub-tabs for 'Basic Parameters', 'Network Parameters', 'Channels Parameters', and 'Alarm Parameters'. The 'Channels Parameters' tab is selected, and it contains two expandable sections: 'Character superposition' and 'Video Coding'. Under 'Video Coding', there are three columns of settings: 'Network Transfer Stream', 'Server-end Storage Stream', and 'Mobile Watching Stream'. The 'Mobile Watching Stream' column is highlighted with a red border. The settings for 'Mobile Watching Stream' are: Resolution: QCIF, Bite Rate Type: Constant, Max. Bite Rate: 60, Quality Upper Limit: 2, Quality Lower Limit: 31, Frame Rate: 8, Stream Type: Video & Aud, Key Frame Interval: 40, and Compression: H.264. A note at the bottom left states 'Note: Save and reboot is a must after change.' and an 'OK' button is at the bottom right.

Network Transfer Stream	Server-end Storage Stream	Mobile Watching Stream
Resolution: 4CIF(D1)	Resolution: CIF	Resolution: QCIF
Bite Rate Type: Constant	Bite Rate Type: Constant	Bite Rate Type: Constant
Max. Bite Rate: 1500	Max. Bite Rate: 500	Max. Bite Rate: 60
[32-4000]	[32-4000Kbps]	[32-4000Kbps]
Quality Upper Limit: 2	Quality Upper Limit: 2	Quality Upper Limit: 2
Quality Lower Limit: 31	Quality Lower Limit: 31	Quality Lower Limit: 31
[2-31]	[2-31]	[2-31]
Frame Rate: 25	Frame Rate: 20	Frame Rate: 8
Stream Type: Video & Aud	Stream Type: Video & Aud	Stream Type: Video & Aud
Key Frame Interval: 100	Key Frame Interval: 80	Key Frame Interval: 40
Compression: H.264	Compression: H.264	Compression: H.264

Note: Save and reboot is a must after change.

OK

**NOTE:** After modifying these settings, click OK, then Save and Reboot the device.

## 2 Operate the IP device according to your mobile operating system

### 2.1 iPhone system

- **Step 1** Install “Vplay” to your iPhone from the App Store



- **Step 2** Setting the parameters in “Vplay”



Input the parameters:

**Server IP:** the remote IP address or the available DDNS.

**Port:** 4602 (Message Port in the P2P parameters)

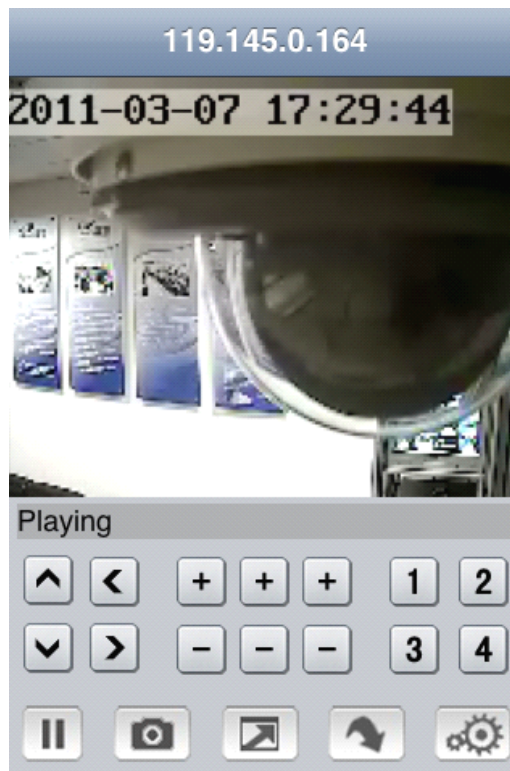
**User ID:** admin (User Name in the P2P parameters)

**Password:** admin (Password in the P2P parameters)



■ **Step 3** Play and control video

Click Play after finish the setting. You will see the video of the IP device now

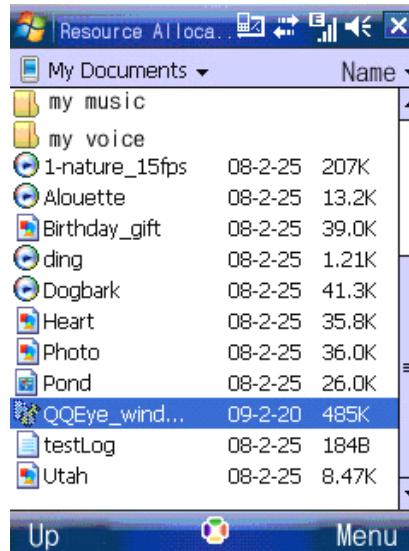


**Button definition:** 【PTZ direction control (left、right、up、down)】；【area select (zoom in、zoom out)】；【focus (+、-)】；【aperture (+、-)】；【snapshot】。

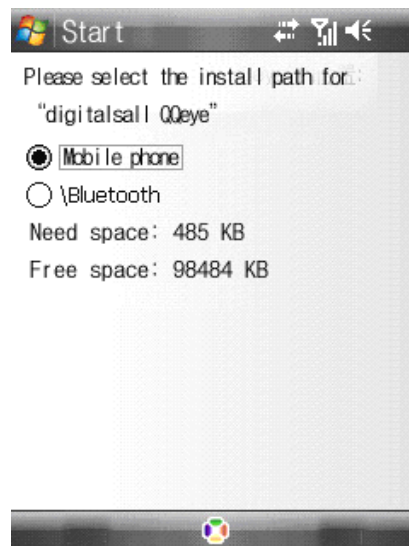
## 2.2 Windows Mobile system

### ■ Step 1 Program download

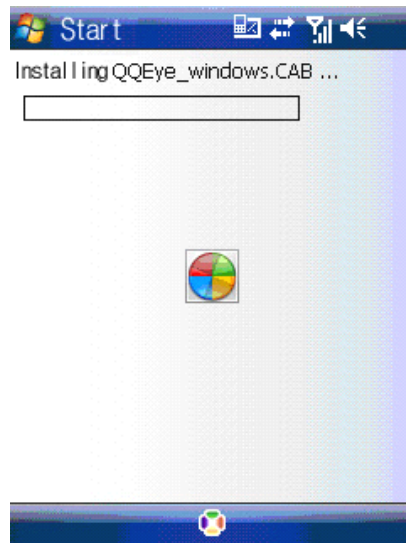
Please download the “**QQEye\_windows mobile**” from the file of “mobile surveillance software”. Copy the installation program whose name is **QQEye\_windows mobile.cab**” to your mobile phone. The default save path is My Documents.



- ### ■ Step 2 Click the program and start to install it, just select default path when it asks you to select install path.



- **Step 3** Click install button to start to install.

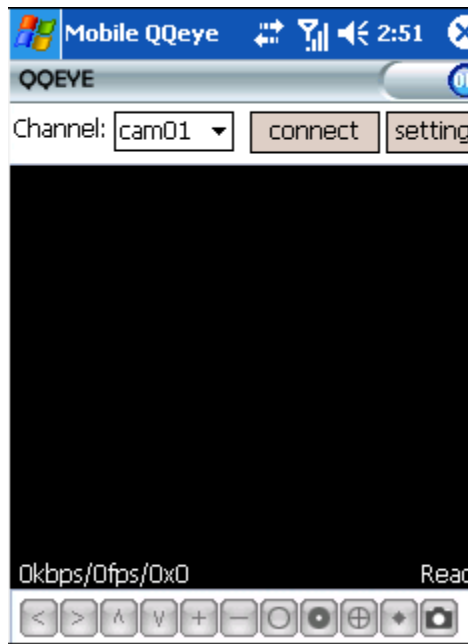


- **Step 4** After installation, click the **QQeye** icon to run the program.





- **Step 5** Login, the main interface is as follow.



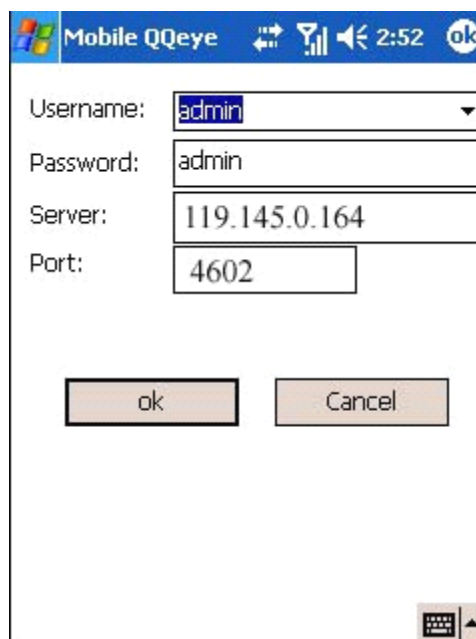
**Connect:** press it to connect to IP DEVICE.

**Setup:** Press it to enter into the interface to config the parameters for mobile phone monitor.

**Button definition:** 【PTZ direction control (left, right, up, down)】; 【area select (zoom in, zoom out)】; 【focus (+, -)】; 【aperture (+, -)】; 【snapshot】 .

**Remark:** Snapshot default save path is: Program>>>QQeye>>>> photo

- **Step 6** When you login for the first time, please setup the network parameters first, press setup to enter into the interface, as follow:



**Server IP:** the remote IP address or the available DDNS.

**Port:** 4602 (Message Port in the P2P parameters)

**User ID:** admin (User Name in the P2P parameters)

**Password:** admin (Password in the P2P parameters)

Please press “OK” after you finished setup.

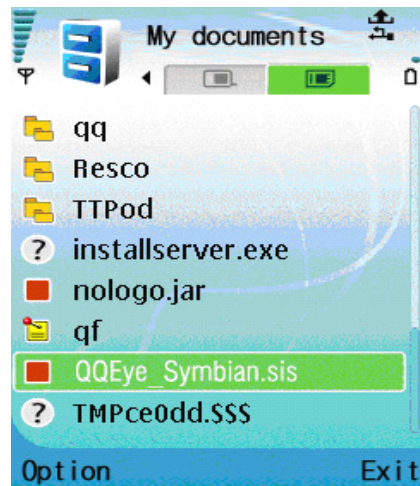


**Display mode:** Normal/Full screen

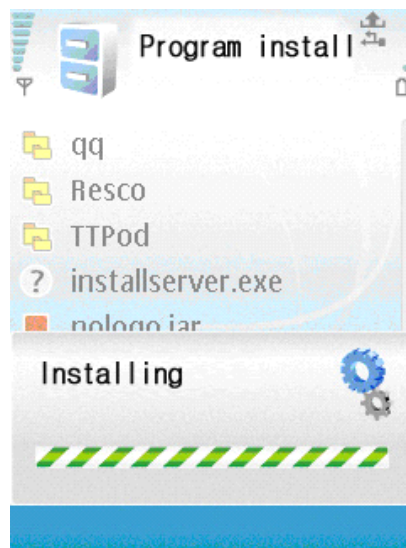
**Remark:** Click screen can switch the display mode between normal and full screen.

## 2.3 Symbian Operating system

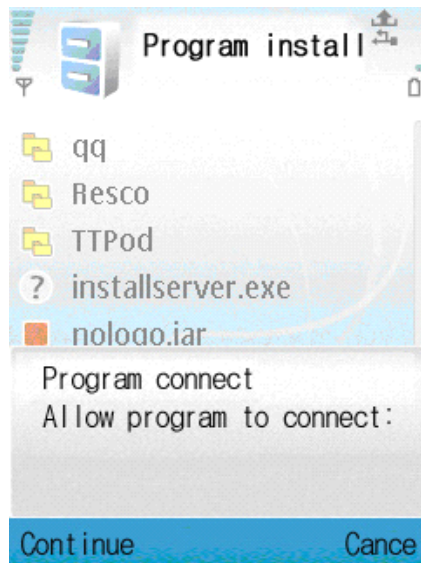
- **Step 1** Please download the “**QQEye.symbian.sis**” from the file of “mobile surveillance software”. Copy the installation program whose name is **QQEye.symbian.sis**” to your mobile phone.



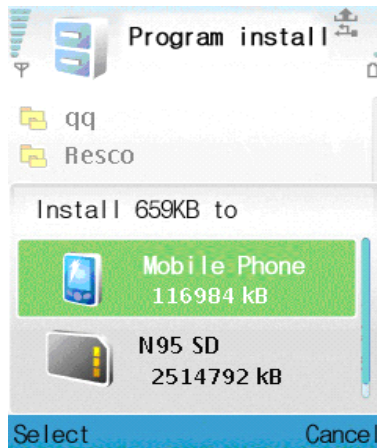
- **Step 2** Click the program to install it.



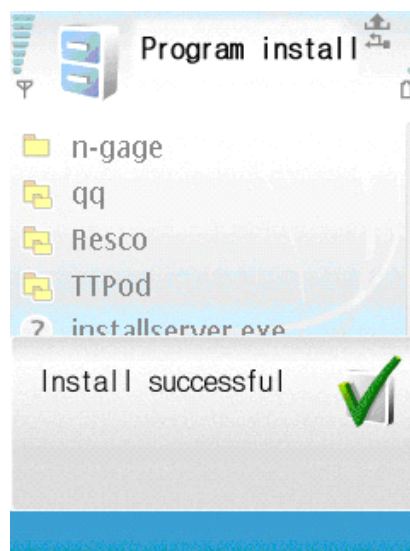
- **Step 3** You can select the install path you want as the follow picture.



- **Step 4** Please select continue when you got the follow window, and make sure your mobile phone can access to internet.



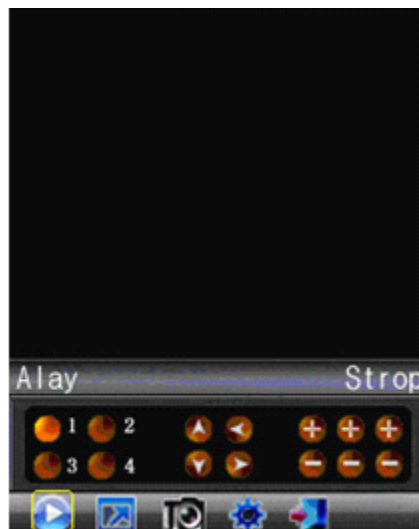
- **Step 5** You will get a notice "install finished" after installed successful.



- **Step 6** Please find the QQeye icon in Application and run it.



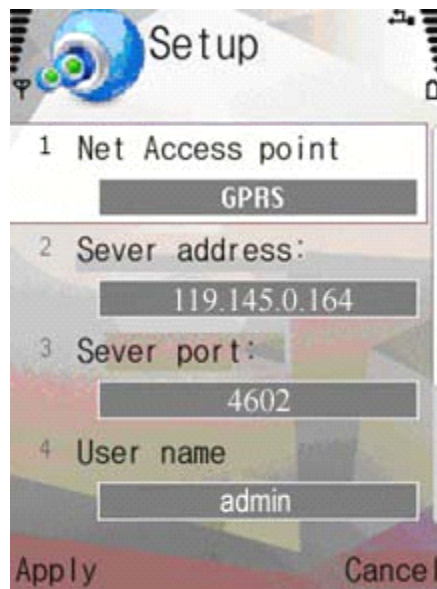
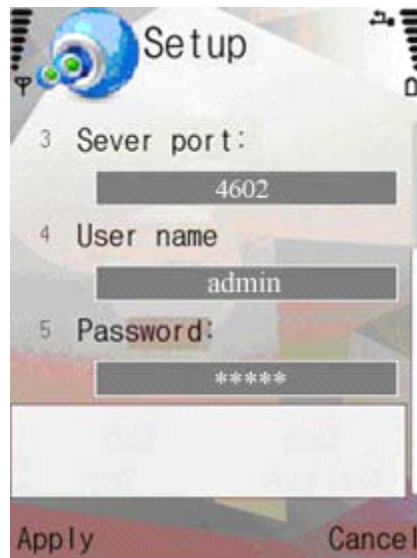
- **Step 7** when you login, you will find the window as follow:



**Button definition:**

CH1 CH2 PTZ : up left zoom in + focus + aperture +  
 CH3 CH4 PTZ : down right zoom out – focus – aperture –  
**【Play/Pause】 【Full screen/Normal】 【Snapshot】 【Setup】 【Exit】**

**Remark:** Snapshot default save path is: "C: \Data\Images\  
 When you login for the first time, please setup the network parameters first, press **【Setup】** to enter into the interface, as follow:



**Net Access point:** Please select the network, GPRS/EDGE/3G

**Server IP:** the remote IP address or the available DDNS.

**Sever Port:** 4602 (Message Port in the P2P parameters)

**User name:** admin (User Name in the P2P parameters)

**Password:** admin (Password in the P2P parameters)

Please press "Apply" after you finished setup.

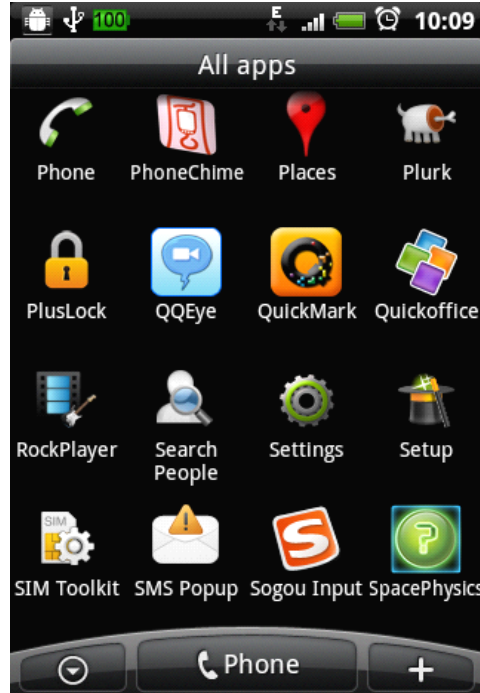


**Display mode:** Normal/ Full screen

**Remark:** Click screen can switch the display mode between normal and full screen.

## 2.4 Android Operating system

- **Step 1** Please download the **QQEye-android.apk** from the file of “mobile surveillance software”. Copy the installation program whose name is **QQEye-android.apk** to your mobile phone.



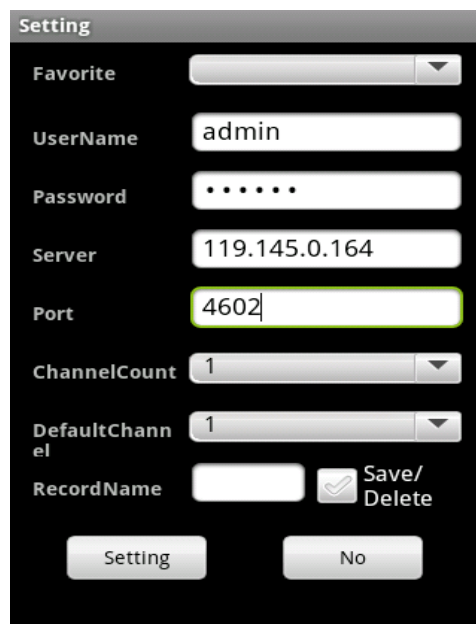
- **Step 2** Open the QQEye, to the Setting interface, input the parameters:

**Server IP:** the remote IP address or the available DDNS.

**Port:** 4602 (Message Port in the P2P parameters)

**User name:** admin (User Name in the P2P parameters)

**Password:** admin (Password in the P2P parameters)





- **Step 3** Click “Play” after finish the setting. You will see the video of the IP device now

