



impro technologies®  
ACCESS CONTROL

# IXP220 | IXP400i SYSTEM

Software | Sagem Integration

## Sagem Integration Impro Touch Software

### Minimum Software Requirements:

ISW903-1-0-GB - Software Requirements

INI960-1-0-GB - Verif Dongle

\* **NOTE:** One token per Sagem Reader

### KEY FEATURES:

- Intelligent distribution of templates
- Bio-server that communicates directly with units and facilitates the bulk upload of templates
- Supports advanced enrolment features such as:
  - Template scoring
  - Quality threshold configuration
  - Print matching
  - Editable number of captures
  - Duplicate check (requires Sagem Ident License)
- Central enrolment from Tagholder configuration
- Single database for user information
- AutoID of Sagem units on a network
- Enhanced upload of multiple templates to Sagem readers
- Support for Mifare units and writing of the template to the card
- Buffering of offline updates



Compatible with |

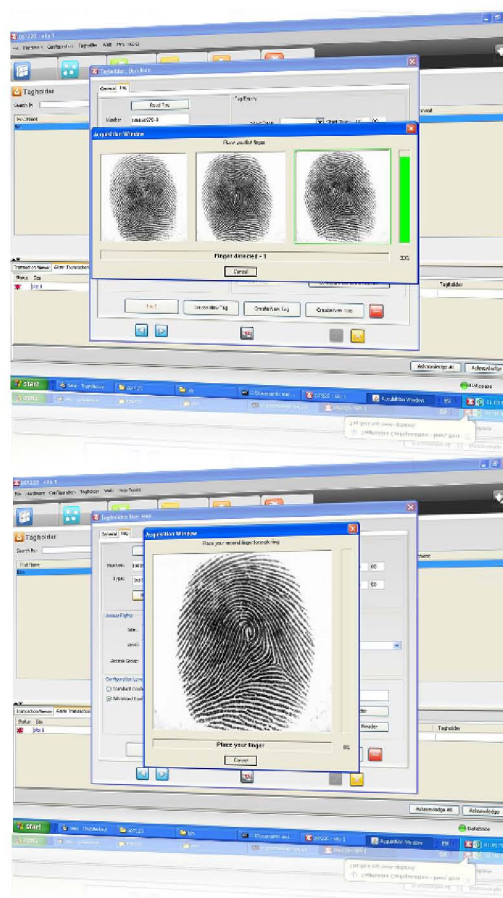


The Impro Touch module facilitates the integration and configuration of various third-party Biometric Readers for use with the IXP220 and IXP400i Software Suites. These systems currently include various Sagem Fingerprint Readers integrated with the IXP220 and IXP400i via the Biometric Server software. The Server Software also allows for the direct enrolment (registration) of Tagholders and related biometric data at those Biometric Readers from within the software. The Impro Touch module uses a centralized database and permits the user to add, edit or delete bio-templates.

The Impro Touch module centres around the principle of a single logon approach to site management and as such, the Impro Touch module allows the user to enrol biometric templates from the Tagholder configuration screen.

The introduction of biometric access control greatly increases the access control capabilities of IXP220 Systems where you need extra security measures. The Sagem biometric readers operate as a verification reader at the door with the Impro Access control system still making the final decision for granting access based on the Tagholder's rights configured and stored in the Controller. Using the Impro Touch module with Sagem hardware puts your site at a greatly enhanced level of security and access control.

#### FINGERPRINT REGISTRATION OF TAGHOLDER



Compatible with |

