

# Controller Software ACCESS PORTAL LITE

Tailored for monitoring and controlling residential and small and medium commercial sites, Access Portal (AP) Lite is the entry-level offering for Impro Technologies 3<sup>rd</sup> Generation "Access Portal" range of access control products.

Up to a maximum of 8 doors with full, anti-pass back (16 readers) are supported.

AP Lite is flexible, allowing for easy re-configuring, and the addition of further hardware. The feature-rich embedded web application may be made securely accessible via any IP-enabled, HTML5-compatible browser. This means that the system is easily accessible via tablet, or PC, and certain mobile Phones (to be announced).

Part of the standard firmware in Impro (CCM) Cluster Controller Modules, AP Lite runs when the CCM is configured for "AP Lite mode" (via quick and easy DIP Switch settings).

AP Lite controls and monitors the actions of associated Access Portal Hardware – the wonderfully versatile black ABS cluster modules, or their IPS installation equivalents, as well as legacy iTT/iTRT/RS485 units, together with their Readers, Keypads, and Strike and Mag Locks.

## Feature Outline:

- Auto ID of the connected hardware
- Flexible Reader to Door Allocation
- Tag Holder Management (Including batches of Tag Holders)
- Up to 1 000 Tag Holders
- Up to 3 tags per tag holder
- Access groups
- Holidays
- Reason codes
- UDP output to user-defined recipient
- Lock down
- Emergency Unlock
- Report generation

Product specification  
**CATALOGUE**



## Key Features

### Date and time

A **Real Time Clock** internal to the Cluster Controller Module is synchronised with the system time of the device whose browser is running the AP LITE Web Application.

**Daylight saving** parameters include Start and End date, as well as the required time shift.

### Auto ID

The Cluster Controller Module scans for all connected hardware and builds a list of all the fixed addresses of all Readers in the system.

### Door Configuration

Door configuration settings include:

- The **name of the Door** (Reception, Factory side, etc.)
- **Disable the door** (Reader/s and lock don't respond)
- **Anti-Pass back** can be enabled / disabled
- The **Entry and Exit Readers addresses** (picked from the Auto ID list, based on your Site Plan - which should show reader addresses per location)
- **Door Mode Pattern:** A graphical input screen allows you to define the Mode of operation of the door, over a maximum of four time zones per day. These Door Modes include:

Locked	:	The Door is locked and cannot be overridden with any Tag.
Tag Only	:	Requires presentation of a Tag to open the Door.
Tag + PIN-code	:	Requires presentation of a Tag followed by entry of a PIN-code to open the Door.
Tag + Reason	:	Requires presentation of a Tag followed by entry of a Reason Code to open the Door.
Open on First Tag	:	The Door is opened when the first valid Tag Holder presents their Tag and remains open.
Unlock	:	The door is unlocked. A Tag is not required to open the Door.

### Reader Settings

The Settings for the Entry and Exit Readers for each door are individually configurable; they include access to the following parameters:

- The Reader's Fixed address
- RTE (Request To Exit): Normally open, or Normally Closed
- DOS (Door Open Sense): Normally open, or Normally Closed
- Door Open Duration
- Strike Duration
- DOS Line Sensing
- Separate Buzzer volume settings for access allowed/denied

### Access Groups

A maximum of 8 Access Groups may be defined, their parameters are:

- Group Name
- Start and End times of access period
- Which days of the week they may have access
- Whether they can have access on holidays
- Which doors they can have access through

### Holidays

Up to 18 holiday periods are easily defined by entering their name and the Start and End Dates.

### Reason Codes

Where employees may need to supply a reason for passing through certain doors, up to 10 reason codes (and their names) can be defined.

### IDP Output

The UDP Output feature sends events generated in the Access Portal LITE System to a third-party application. Parameters include the Receiving Port Number, IP Address and the interval time in seconds

### Tag Holder Template

This allows you to set the default parameters and thus saves on typing when a number of similar Tag Holders need to be added. Parameters include:

- PIN Code
- Custom Field
- Access Group
- Start and End Dates
- Suspend Tag option

### Tag Holders

- Up to 1000 Tag Holders may be added, either one at a time, or in batches.
- Each Tag Holder can be individually edited, or deleted.
- Each Tag holder may be allocated up to three tags – each of which can have different Tag settings.
- Tag Holder parameters include:

- First and last Names
- Access Level
- PIN Code
- Custom Field

### Tags

- As each Tag Holder may be allocated up to three Tags, the system will accommodate a total of 3 000 Tags.
- Tag parameters include:

- Tag Code
- Access Group
- Start and End Dates
- Suspend Tag

- The three Tag icons associated with each Tag Holder are colour coded to make it very easy to see the Tag Status at a glance:

GREY:	No Tag (no tag data stored under this icon)
BLACK:	Future (Start date is still in the future)
GREEN:	Active
RED:	Suspended (a manual setting that is easy to change)
PINK:	Expired (End Date has passed)

### System Overrides

#### Lock Down

- This denies access through all controlled doors for all persons.
- All controlled doors LOCK immediately, no tags or codes can open any door.

#### Emergency Open

- This allows anybody to get through any of the doors controlled by the system.
- All controlled doors UNLOCK immediately

### Reports

- Reports are generated and displayed on-screen
- Reports may be Exported and Downloaded as CVS files, suitable for viewing and editing with a Spread Sheet Application.
- There are Four Report Categories:

- Access** : Report provides access data for the selected Tag Holder over a specified date range.
- Status** : Report displays all the status transactions from Controllers and Terminals on a selected date.
- Audit** : Report provides a list of Tags added, edited or deleted over a specified date range.
- Hours Worked** : this Report calculates hours worked from the IN and OUT Transactions of the Anti-pass back (APB) Zone

### Offline validation

This option allows you to choose between having Door Controllers run as offline capable controllers, or as transparent entities that rely entirely upon their (RS485) connection with the Access Portal Lite Controller. Both options have advantages and disadvantages. The choice made will depend on the installation's requirements.

### Anti-pass back

You can select between:

- Strict** : Enforced Anti-pass back Zone rules for in and out directions. A Tag Holder cannot enter or exit a Zone consecutively.
- Relaxed** : After entering a Zone, the Tag Holder must exit the Zone using their Tag before they can re-enter. However, Tag Holders can use their Tags for multiple, consecutive exits in this Mode.

### Ethernet Settings

These are accessible and adjustable so that the Cluster Controller won't clash with anything else on the network:

- Device Name (This is the network HOST name)
- Enable DHCP (Checkbox is selected by default; de-select the checkbox to set a static IP Address for the Controller.)
- IP Address
- Subnet Mask
- Gateway
- DNS Server
- Controller Port
- Web Server Port

### UDP Output

The UDP Output feature sends events generated in the Access Portal LITE System to a third-party application. You can set up the Receiving IP Address, the Receiving Port and specify the Keep-Alive Time.

### Administrator Password

This is the password that is prompted for whenever the Access Portal Lite web application is launched. It may be easily changed through the settings menu.

### Related Information

For extra information relating to the product refer to:

HCM321-0-0-GB-XX : Access Portal Lite Software Manual

### Ordering Information

Access Portal Lite comes pre-installed on all IP-equipped Impro (CCM) Cluster Controller Modules; there is no need to order it separately.

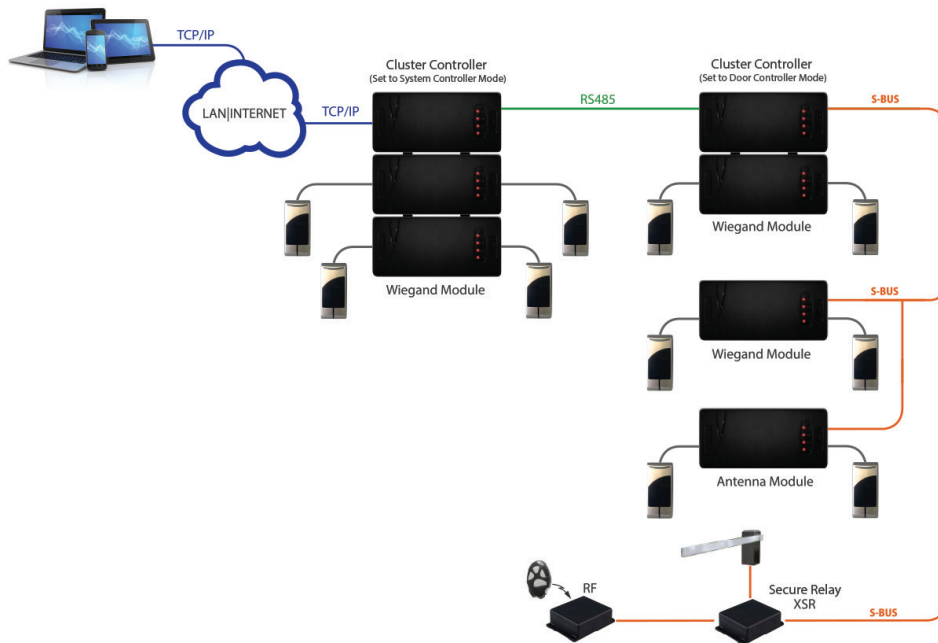


Figure 1: System layout showing the networking flexibility of Access Portal Lite

This Product Specification Catalogue applies to Access Portal LITE Version 4.35, Website Version 1.0.938			
HCM371-0-0-GB-00	Issue 1	November 2013	IMPRO\Access Portal\Access Portal Lite Software Manuals\Product Specification Catalogue\APLite-psc-01.pdf