



MODEL NUMBER: XMR901-1-0-GB-XX

IMPROX MHR

ImproX (MHR) Harsh Environment Micro Remote Reader INSTALLATION MANUAL

SPECIFICATIONS

Working Environment	Designed to work in an indoor or outdoor environment similar to IP53. The ImproX MHR is, therefore, sealed (potted) against water.	
Input Voltage	5 V DC, polarity sensitive.	
Power Requirements	Current (mA)	Power (W)
Input Voltage 5 V DC, Indicators ON	100	0.50
Frequency	125 kHz.	
Buzzer		
Volume and Tone	Single tone, 4-step adjustable volume.	
Status Indicator		
Status LED	Bi-coloured Red or Green (externally visible).	

INSTALLATION INFORMATION

Accessories

Find the following when unpacking the Remote Reader:

- An ImproX MHR Remote Reader housed in a Zinc alloy die-cast housing. The ImproX MHR consists of a Front Cover and a Backing Plate (the Backing Plate is attached with a Hexagonal Screw (M3 x 8 mm)).
- An Allen Key (2 mm).
- Four Brass Wood Screws (3.5 mm x 25 mm).
- Four Wall Plugs (7 mm).
- An extra Serial Number Label.

General

Remember the following when installing the Remote Reader:

Maximum Data Communications Distance

The distance between the Remote Reader and the ImproX DT, ImproX MFT, ImproX PT, ImproX TA or the IXP121 Controller can be extended to a maximum of 10 m (33 ft) using a good quality shielded multi-strand 2-pair twisted cable. The individual conductor cross-sectional area of the cable must not be less than 0.2 mm^2 (0.0003 in^2).

Distance between Remote Readers from DIFFERENT Terminals or Controllers

To avoid mutual interference, install the Remote Readers no closer than 500 mm (20 in) apart.

Mounting the ImproX MHR

CAUTION: Make certain that you mount the Remote Reader on a vibration-free surface.

Select the mounting position of the ImproX MHR, considering accessibility, routing of wires and visibility of the externally visible Status LED.

Secure the ImproX MHR to the mounting surface, using three suitable screws and wall plugs (supplied), nuts and bolts or rivets.

Blank Space

Connecting the ImproX MHR

Figure 1 to Figure 3 shows detailed connection diagrams for the ImproX MHR.

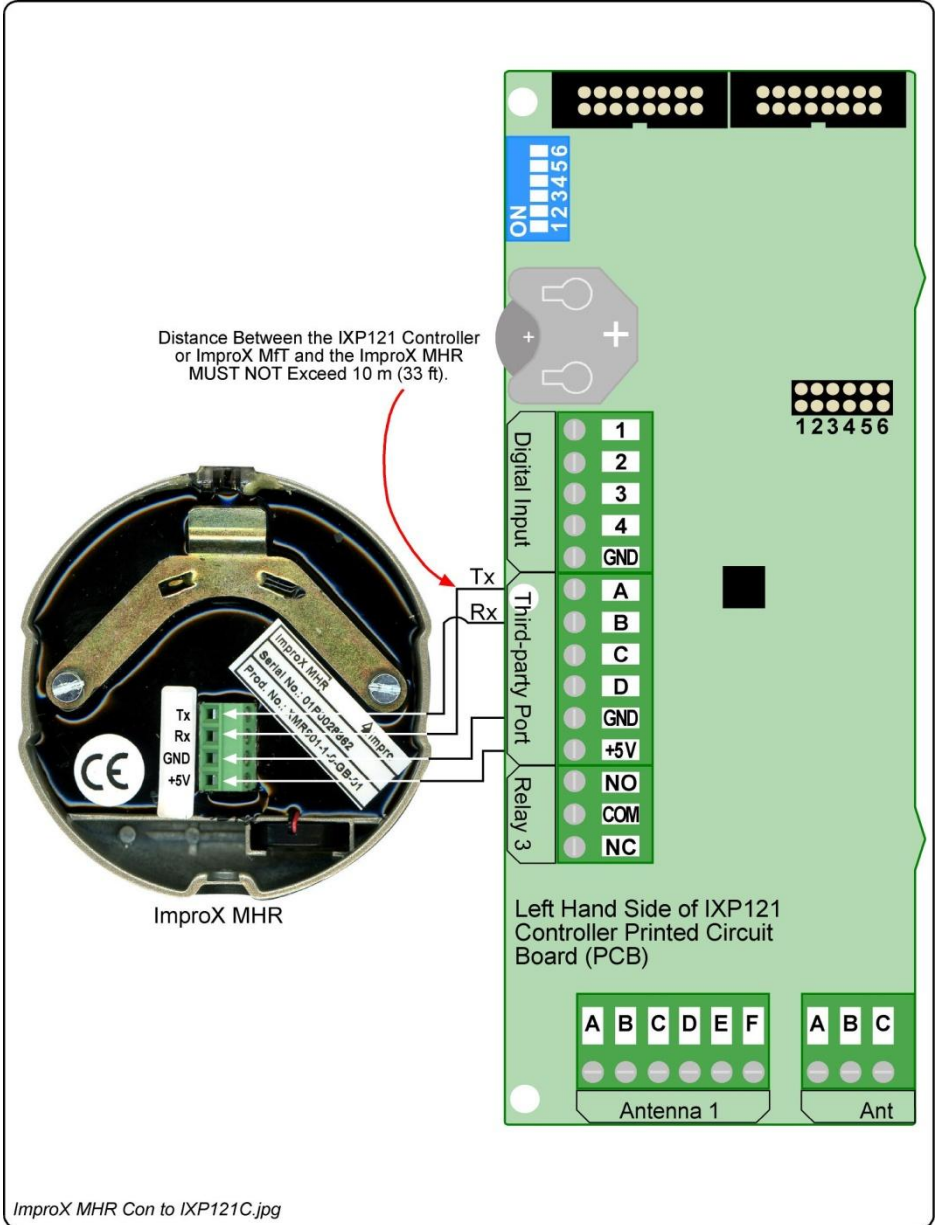


Figure 1: ImproX MHR Connected to the IXP121 Controller or ImproX MfT

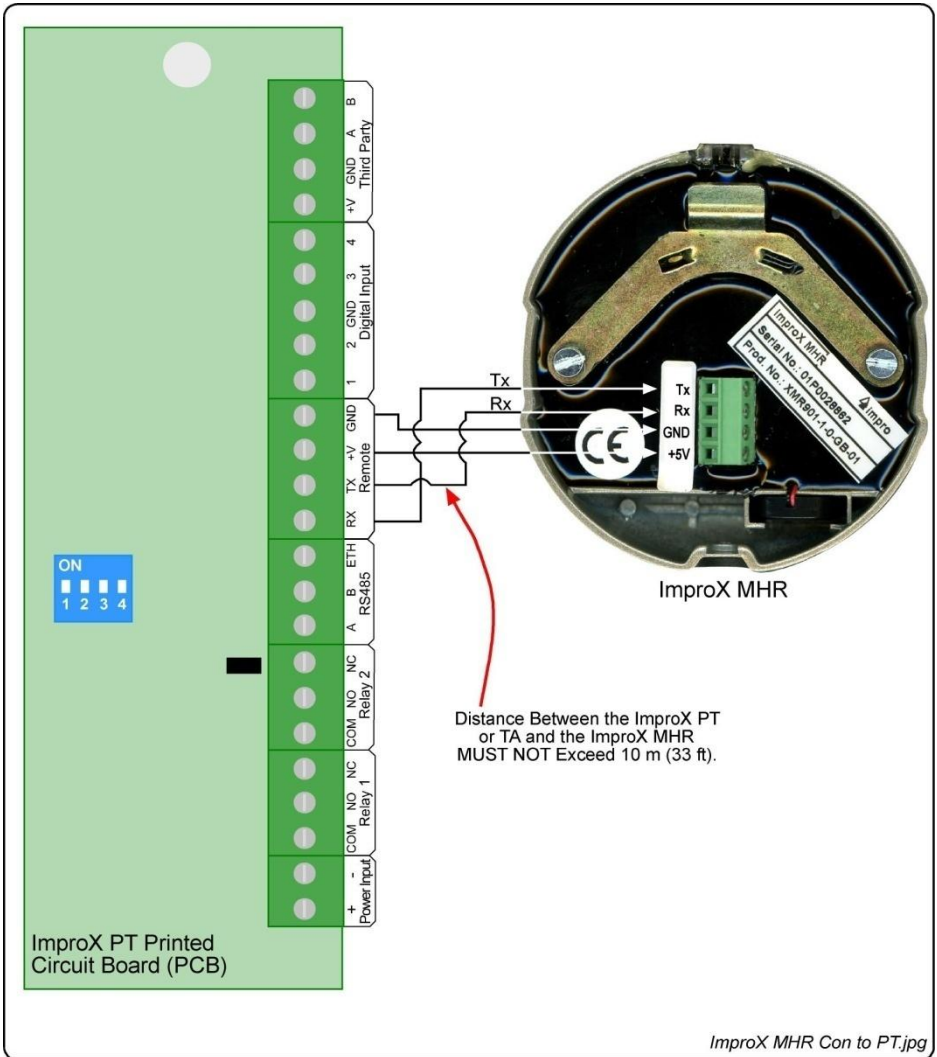


Figure 2: ImproX MHR Connected to the ImproX PT or ImproX TA

Blank Space

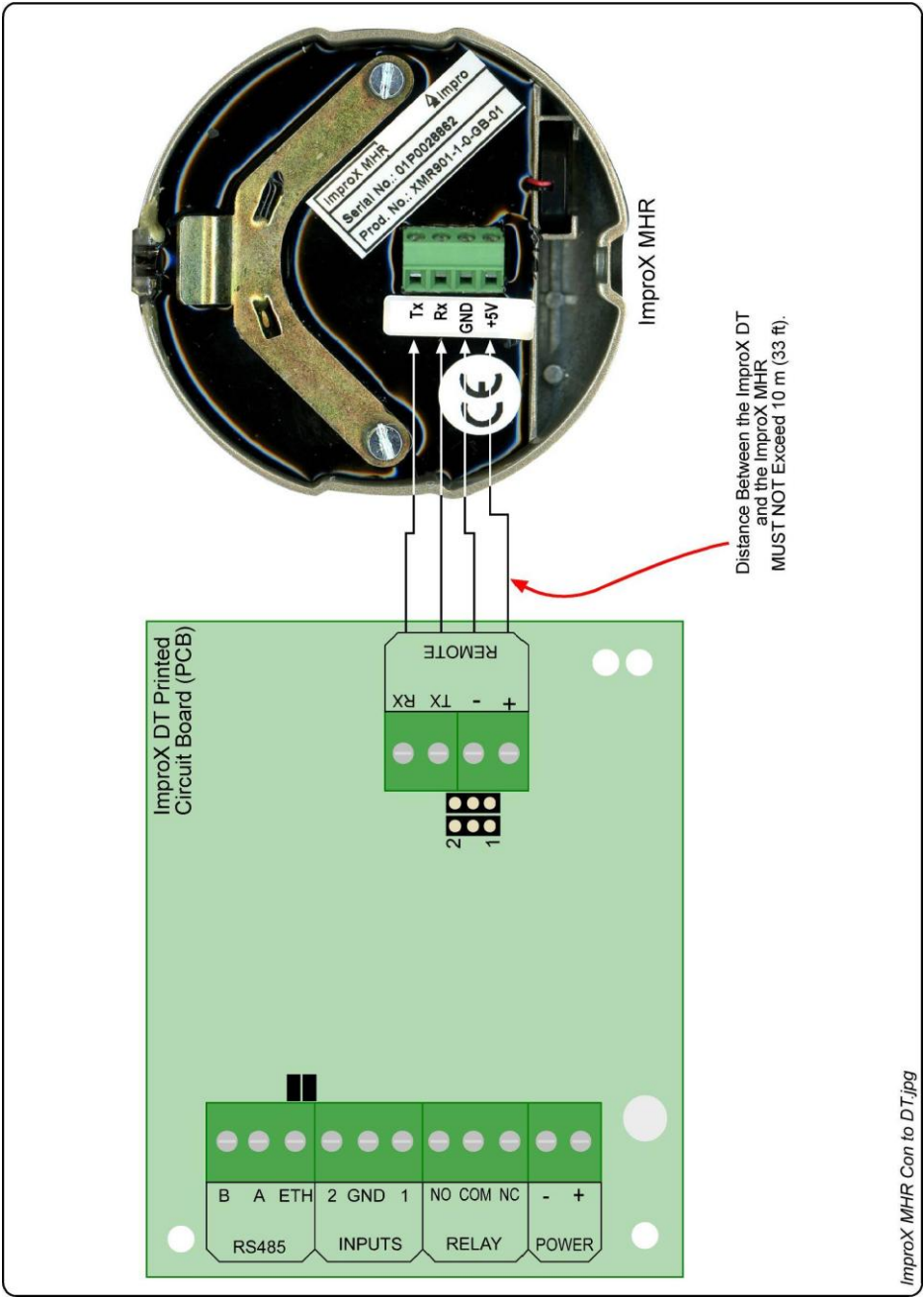


Figure 3: ImproX MHR Connected to the ImproX DT

NOTE: *On powering up, the Remote Readers Status LED will illuminate solid Red, and the Buzzer will beep twice.*

The ImproX MHR will not read Tags until configured in the Software. Details of these procedures are located in the IXP120, 200 or 300 and 400 Software Manuals.

Serial Number Label

Once the Remote Reader is installed, sketch a rough site plan. The loose Serial Number Label (packaged with the Remote Reader) should be used (paired) in conjunction with the ImproX DT, ImproX MfT, ImproX PT, ImproX TA or the IXP121 Controllers Fixed Address Label.

The Remote Reader does not have its own Fixed Address. When connected to an ImproX DT, ImproX MfT, ImproX PT, ImproX TA or the IXP121 Controller the Remote Reader is assigned one of the available Fixed Addresses.

The Serial Number Label identifies the type of Remote Reader, and the Fixed Address Label (shipped with the ImproX DT, ImproX MfT, ImproX PT, ImproX TA or the IXP121 Controller) identifies the Fixed Addresses. Both these labels should be attached to the site plan to assist in identifying the hardware once an Auto-ID is performed.

GUARANTEE OR WARRANTY

This product conforms to our Guarantee or Warranty details placed on our Web Site, to read further please go to www.impro.net.

USER NOTES

USER NOTES



This manual is applicable to the ImproX (MHR) Harsh Environment Micro Remote Reader, XMR901-1-0-GB-01. (The last two digits of the Impro stock code indicate the issue status of the product).

XMR300-0-0-GB-10	Issue 11	Dec 2007	ImproX MHR\English Manuals\LATEST ISSUE \ImprXMHR-inism-en-11.docx
------------------	----------	-------------	---