

MODEL NUMBER: XTT909-1-0-GB-XX

IMPROX CA

ImproX (CA) 125 kHz Conduit Antenna Reader INSTALLATION MANUAL

SPECIFICATIONS

Working Environment	The IP rating for the ImproX CA is equivalent to the selected Cabinets rating.
Buzzer	
Volume and Tone.....	Single tone, 4-step adjustable volume.
Status Indicators	
Status LED.....	Bi-coloured Red or Green.

INSTALLATION INFORMATION

Accessories

Find the following when unpacking the Antenna Reader:

- 10 ImproX CA Antenna Reader printed circuit board assemblies.
- An extra Serial Number Label.

General

Remember the following when installing the Antenna Reader:

Maximum Data Communications Distance

The ideal cable distance between the Terminal, Controller or Receiver and its Antenna Reader ranges between 2 m to 16 m (7 ft to 53 ft). Achieve this by using a good quality shielded multi-strand 3-pair twisted cable. The cross-sectional area of the cable must not be less than 0.2 mm^2 (0.0003 in^2).

Cable Specifications

The cable specifications should be similar to the following:

Conductor Resistance:	< 2 ohms.
Capacitance, Core to Earth:	< 160 pF/m.
Capacitance, Core to Core:	< 100 pF/m.

Distance between Antenna Readers from the SAME Terminal, Controller or Receiver

To avoid mutual interference, install the Antenna Readers no closer than 150 mm (6 in) apart.

Distance between Antenna Readers from DIFFERENT Terminals, Controllers or Receivers

To avoid mutual interference, install the Antenna Readers no closer than 500 mm (20 in) apart.

Approved Cabinets

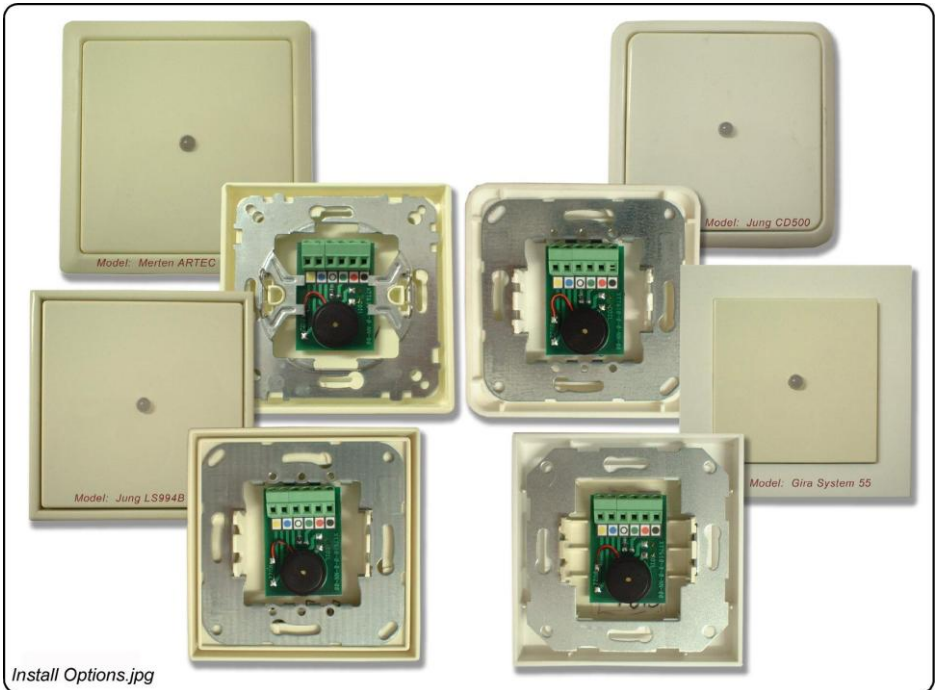


Figure 1: Electrical Conduit Blanking Plate Options

The ImproX CA is approved for use with the following Electrical Conduit Blanking Plates (specific to the European Market):

- Jung LS994B.
- Jung CD500.
- Merten ARTEC.
- Gira System 55.

Blank Space

Mounting the ImproX CA

WARNING: DO NOT MOUNT THE IMPROX CA IN THE SAME ELECTRICAL JUNCTION BOX AS THE MAINS ELECTRICAL SUPPLY.

CAUTION: Make certain that you mount the Antenna Reader on a vibration-free surface.

1. Drill a 5 mm hole in the centre of your chosen Electrical Conduit Blanking Plate, to accommodate the Status LED.
2. Remove the paper covering from the double-sided adhesive tape.

NOTE: Place general purpose Silicone Sealer around the base of the Status LED for added waterproofing.

3. Push the Status LED through the hole, in the Blanking Plate, from back to front.
4. Firmly press the ImproX CA to the back of the Electrical Conduit Blanking Plate.

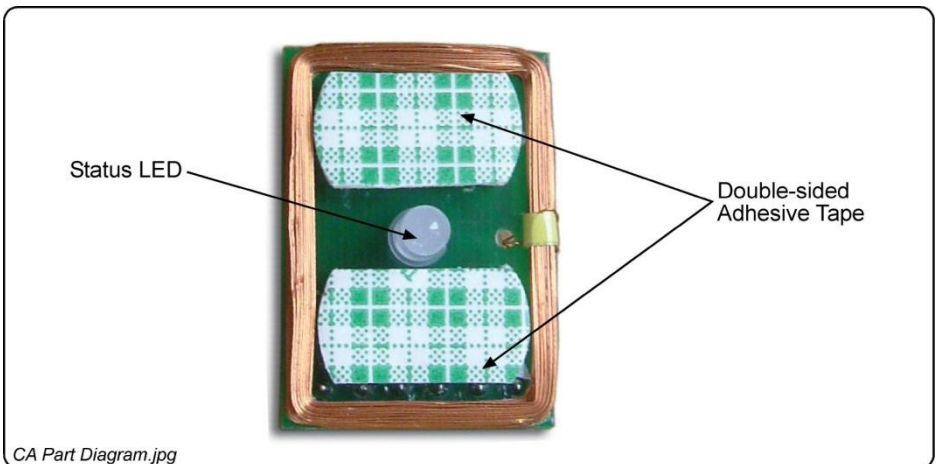


Figure 2: ImproX CA Part Diagram

Blank Space

Connecting the ImproX CA

Figure 3 to Figure 6 show detailed connection diagrams for the ImproX CA.

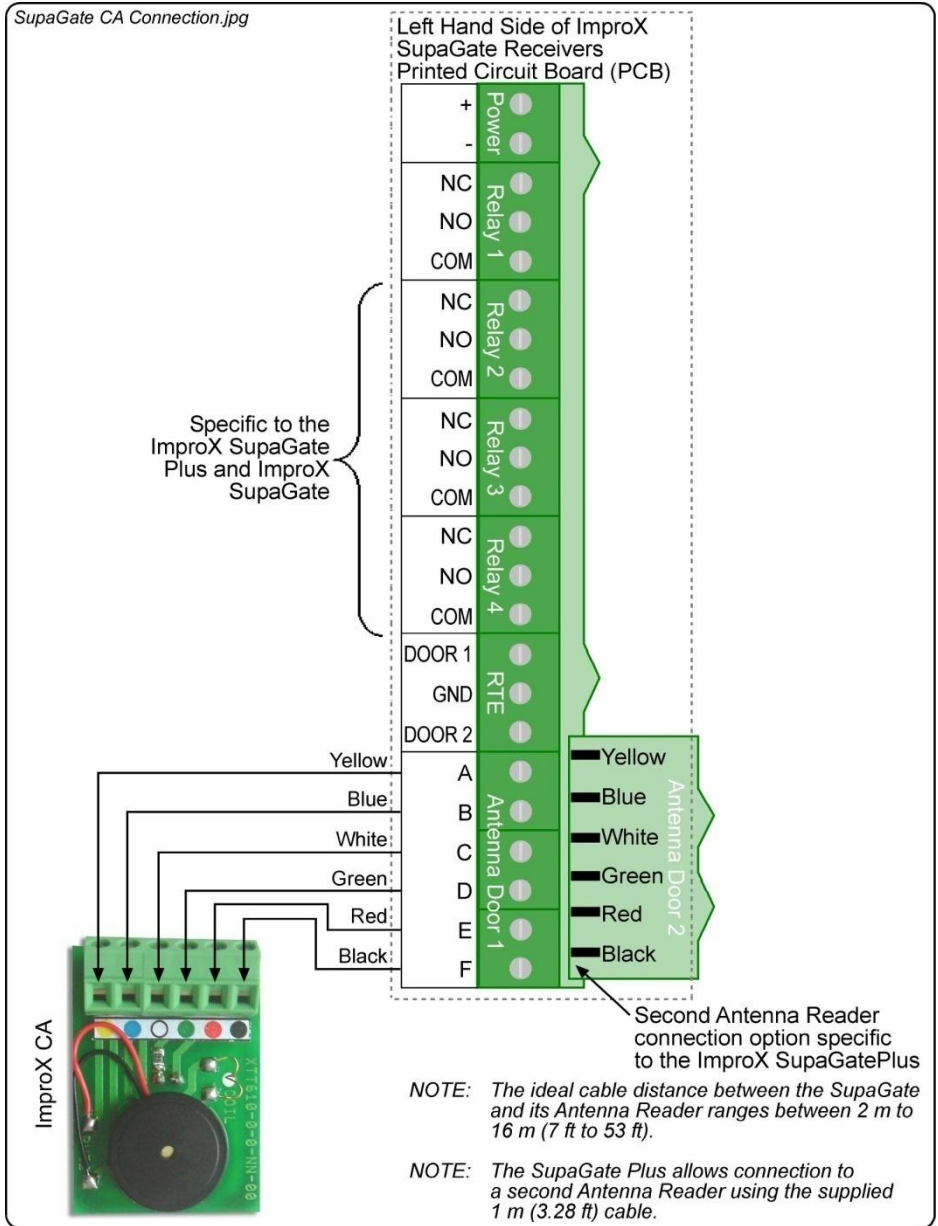


Figure 3: ImproX CA Connected to the SupaGate Receiver

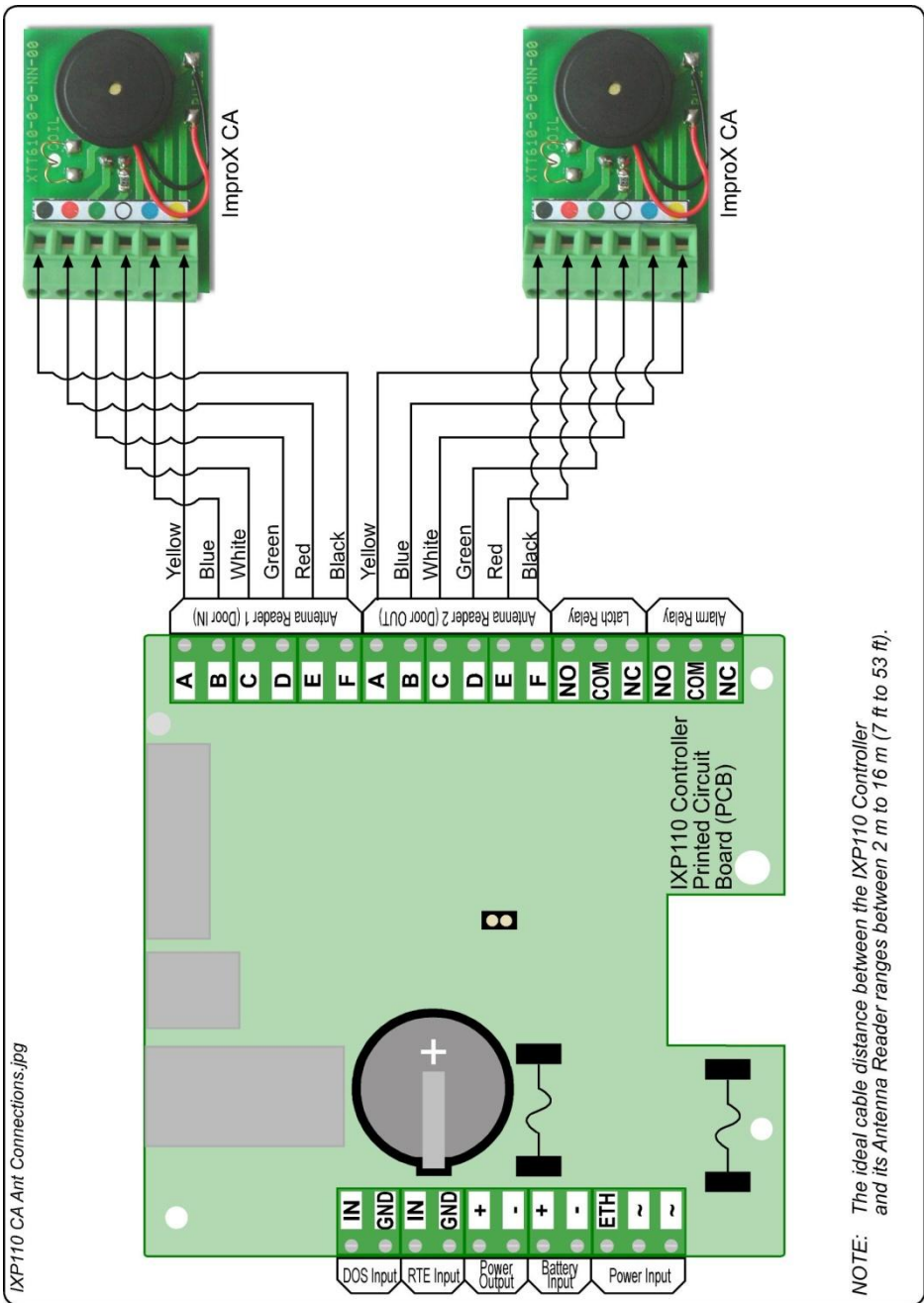


Figure 4: ImproX CA Connected to the IXP110 Controller

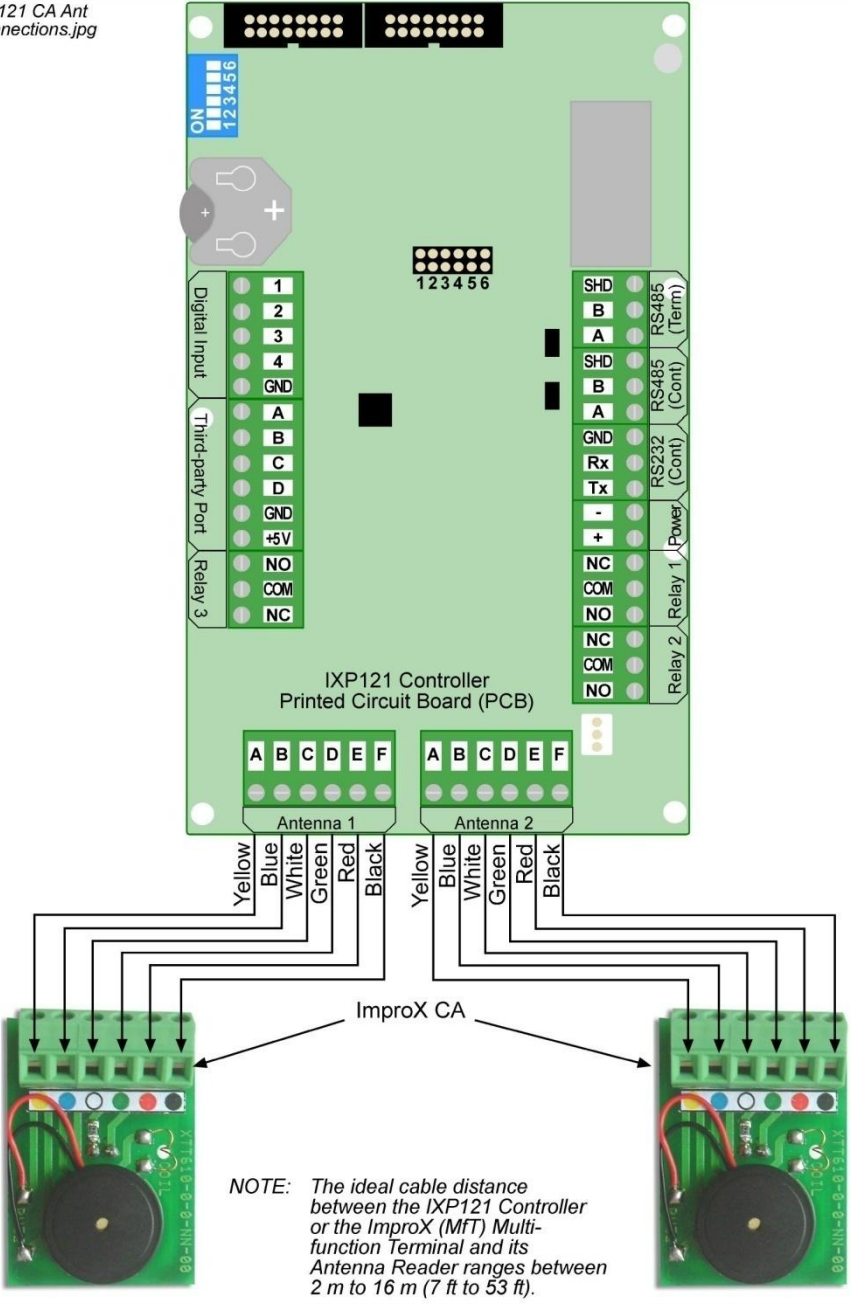


Figure 5: ImproX CA Connected to the IXP121 Controller and ImproX Mft

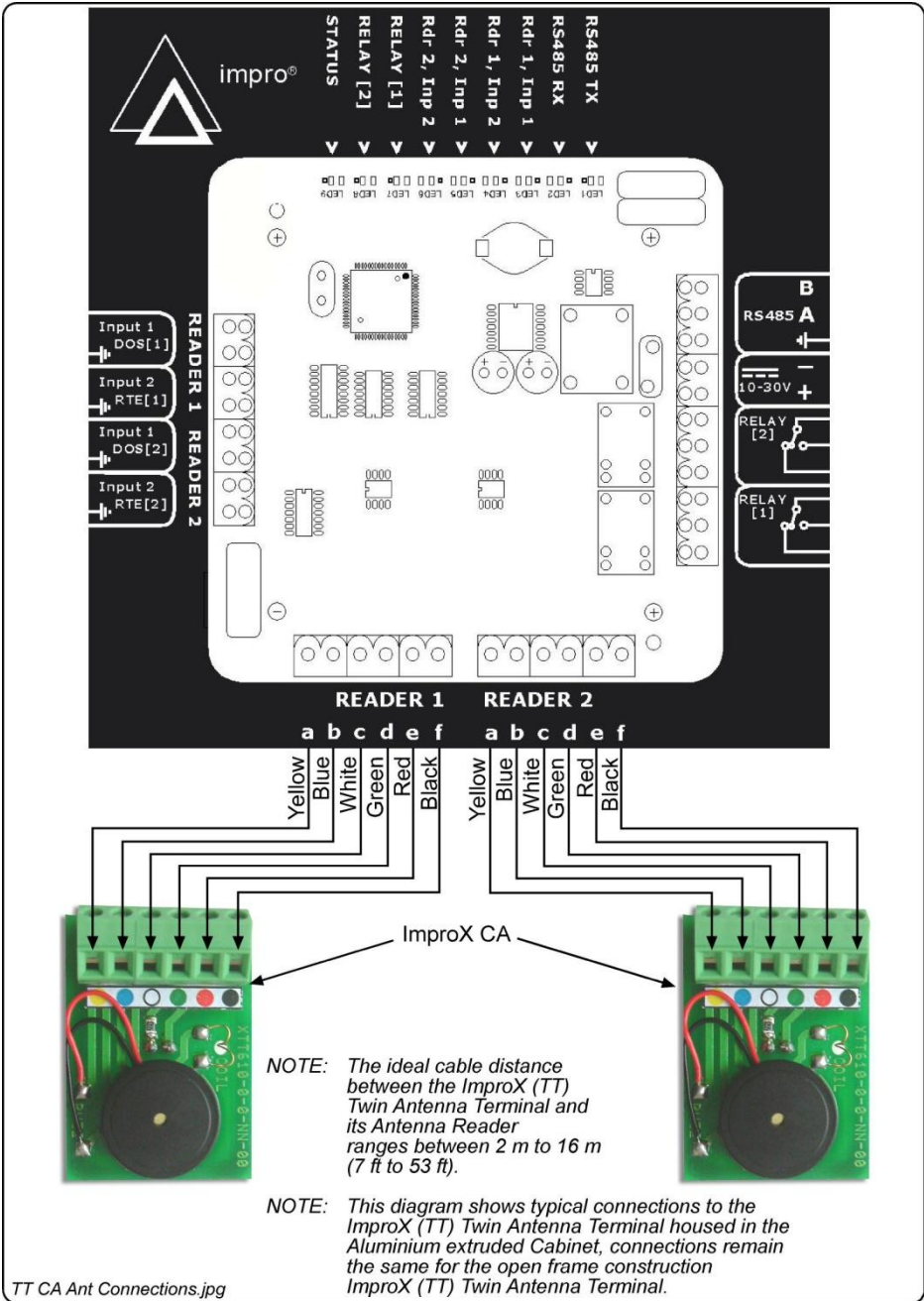


Figure 6: ImproX CA Connected to the ImproX TT

NOTE: On powering up, the Antenna Reader's Status LED will illuminate solid Red. The Antenna Reader will not read Tags until configured in the Software.

Serial Number Label

1. Once the Antenna Reader is installed, sketch a rough site plan.
2. Attach the Antenna Reader's loose Serial Number Label and the Controller, Terminal or Receiver's Fixed Address Label, to the sketched site plan in the position of the Antenna Reader.

The Antenna Reader does not have its own Fixed Address. When connected to a Controller, Terminal or Receiver the Antenna Reader is assigned one of the available Fixed Addresses.

The Serial Number Label identifies the type of Antenna Reader, and the Fixed Address Label (shipped with the Controller, Terminal or Receiver) identifies the Fixed Addresses. Both these labels should be attached to the site plan to assist in identifying the hardware once an Auto-ID is performed.

GUARANTEE OR WARRANTY

This product conforms to our Guarantee or Warranty details placed on our Web Site, to read further please go to www.impro.net.

USER NOTES

This manual is applicable to the ImproX (CA) 125 kHz Conduit Antenna Reader, XTT909-1-0-GB-00. (The last two digits of the Impro stock code indicate the issue status of the product).			
XTT309-0-0-GB-04	Issue 05	Dec 2007	ImproX CA\English Manuals\LATEST ISSUE \\mprXCA-inism-en-05.docx