



Avigilon Control Center Virtual Matrix User Guide

Version 5.0.2

Copyright © 2013 Avigilon. All rights reserved.

The information presented is subject to change without notice.

No copying, distribution, publication, modification, or incorporation of this document, in whole or part, is permitted without the express written permission of Avigilon. In the event of any permitted copying, distribution, publication, modification, or incorporation of this document, no changes in or deletion of author attribution, trademark legend, or copyright notice shall be made. No part of this document may be reproduced, stored in a retrieval system, published, used for commercial exploitation, or transmitted, in any form by any means, electronic, mechanical, photocopying, recording, or otherwise, without the express written permission of Avigilon.

Avigilon

Tel +1.604.629.5182

Fax +1.604.629.5183

<http://www.avigilon.com>

Revised 2013-10-29

Table of Contents

Introduction	1
What is the Avigilon Control Center Virtual Matrix?.....	1
System Requirements	1
For More Information	2
Getting Started	4
Editing Monitor Settings	6
Logging Into and Out of a Site	7
Adding and Removing a Monitor View	8
Adding a Monitor View	8
Removing a Monitor View	8
Resizing a Monitor View	9
Starting and Shutting Down the Virtual Matrix	10
Starting the Virtual Matrix	10
Shutting Down the Virtual Matrix	10

Introduction

What is the Avigilon Control Center Virtual Matrix?

The Avigilon Control Center Virtual Matrix software is an optional Enterprise Edition feature that allows you to control how video is monitored across multiple displays.

The Virtual Matrix software is used to connect a system with multiple monitors to the Avigilon Control Center System. Once connected, you can control what is displayed on each of the linked monitors through any instance of the Avigilon Control Center Client software. This includes choosing the cameras that are displayed, setting the View layout, and displaying maps, web pages and alarms.

A copy of the Virtual Matrix software can be downloaded from the Avigilon website.

System Requirements

	Minimum requirements	Recommended requirements
Monitor resolution	1280 x 1024	1280 x 1024
OS	Windows XP with Service Pack (SP) 2 or later, Windows Vista, Windows 7 or Windows 8 64-bit	Windows XP with Service Pack (SP) 2 or later, Windows Vista, Windows 7 or Windows 8 64-bit
CPU	Intel Single Core 2.4 GHz processor	Intel Dual Core 2.0 GHz processor
System RAM	1 GB	2 GB
Video card	PCI Express, DirectX 9.0c compliant with 128 MB RAM (Intel GMA 900 or better, NVIDIA 6600 or better, ATI X1300 or better)	PCI Express, DirectX 10.0 compliant with 256 MB RAM (NVIDIA GeForce 600 series or better)

Network card	100 Mbps	1 Gbps
Hard disk space	500 MB	500 MB

For More Information

Visit Avigilon at <http://www.avigilon.com/> for additional product documentation.

Avigilon Training Center

The Avigilon Training Center provides free online training videos that demonstrate how to set up and use the Avigilon Surveillance System. Register online at the Avigilon Partner Portal site to begin:

<http://avigilon.force.com/login>

Support

For additional support information, visit <http://avigilon.com/support-and-downloads/>.

The Avigilon Partner Portal also provides self-directed support resources - register and login at

<http://avigilon.force.com/login>.

Regular Avigilon Technical Support is available Monday to Friday from 12:00 a.m. to 6:00 p.m. Pacific Standard Time (PST):

- North America: +1.888.281.5182 option 1
- International: +800.4567.8988 or +1.604.629.5182 option 1

Emergency Technical Support is available 24/7:

- North America: +1.888.281.5182 option 1 then dial 9
- International: +800.4567.8988 or +1.604.629.5182 option 1 then dial 9

E-mails can be sent to: support@avigilon.com.

Upgrades


Software and firmware upgrades will be made available for download as they become available. Check <http://avigilon.com/support-and-downloads/> for available upgrades.

Feedback

We value your feedback. Please send any comments on our products and services to feedback@avigilon.com

Getting Started

1. After you install the Avigilon Control Center Virtual Matrix software, launch the application by performing one of the following:

- o Double-clicking the  desktop shortcut
- o Select **All Programs** or **All Apps > Avigilon > Avigilon Control Center Virtual Matrix**.

2. You are prompted to login.

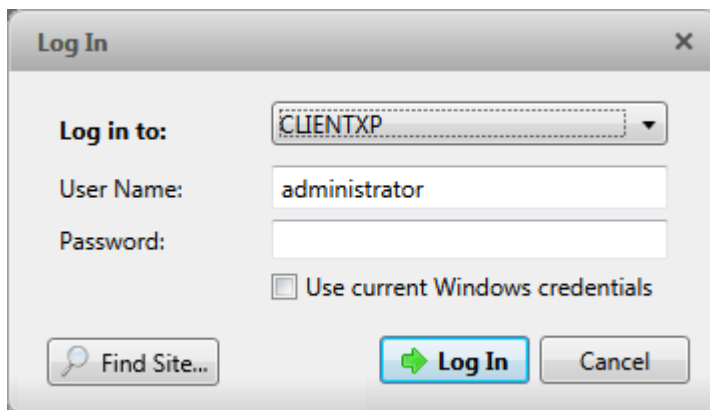


Figure A. Log In dialog box

1.
 - a. In the **Log in to** drop down list, select the Site you want to connected to. If the Site you want to access is not listed, see [Logging Into and Out of a Site](#) for more information.
 - b. Enter the username and password for the server.
 - c. Click **Log In**.

Once you are logged in, a View is automatically added to each monitor that is connected to the system. When you move your mouse, the settings dialog box is automatically displayed on all monitors. If you leave your monitor idle, the dialog box will automatically hide itself. For more information about editing monitor settings, see [Editing Monitor Settings](#).

To edit or control what is displayed in each View, you must login to the same server through the Avigilon Control Center Client software. Through the Client software, you can add cameras, maps and web pages to each View, and you can change the layout that is displayed on each monitor. For more information, see the *Avigilon Control Center Enterprise Client User Guide*.

Editing Monitor Settings

When you move your mouse across any monitor, the Monitor Settings dialog box automatically appears on every monitor. Each dialog box is specific to the monitor it is displayed on top of. If you leave the monitors idle, the dialog box will auto-hide on all monitors.

Monitor Settings

Monitor Name ALAI-2-2

Monitor Logical ID 1

Update

Site Information

Current Site RAZMC00026

Change Site

+ Add Monitor X Close Monitor

Help

- **Monitor Name:** give the monitor a meaningful name to help you identify the monitor in the Avigilon Control Center Client software. By default, the monitor name is the *<computer name>-<monitor number>*. Click **Update** to apply any changes you make.
- **Monitor Logical ID:** enter a unique number to access the monitor through keyboard commands in the Client software. Click **Update** to apply any changes you make.
- **Site Information:** this area tells you what Site the Virtual Matrix software is currently connected to. If you need to access a different Site, see [Logging Into and Out of a Site](#) for more information.
- If you want to add or remove the View monitor on your screen, see [Adding and Removing a Monitor](#).

Logging Into and Out of a Site

In [Getting Started](#), you learned how to login to a Site after you first launch the Virtual Matrix software. To login to a different Site, you will need to access the Monitor Settings dialog box.

Note: You cannot connect monitors to different Sites. When you connect to one Site, all monitors within the system are connected to the same Site.

1. Move your mouse across the screen to display the Monitor Settings dialog box then click **Change Site**.
2. When the Log In dialog box is displayed, select the server you want to switch to from the drop down list then enter the username and password to access the Site.
3. If the Site you want is not listed, click **Find Server**.

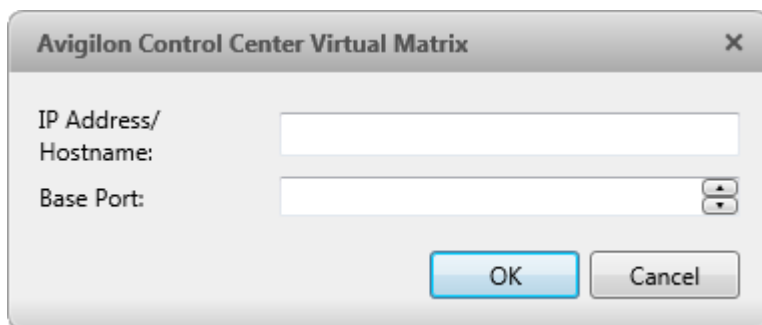


Figure A. Find Site dialog box

- a. In the dialog box, enter the IP address or hostname of the Site you want to connect to.
- b. The base port is 38880 by default. Consult your System Administrator if the base port has been changed in the Avigilon Control Center Admin Tool software. See the *Avigilon Control Center Server User Guide* for more information.
- c. Click **OK** then enter your Site login.

Once you are logged into the new Site, you are automatically logged out of the last Site. If you only want to log out of a Site, you will need to shut down the Virtual Matrix software. For more information, see [Starting and Shutting Down the Virtual Matrix](#).

Adding and Removing a Monitor View

By default, a View from the Avigilon Control Center Client software is added to each monitor when the Virtual Matrix is launched. You can add or remove monitor Views as required.

Adding a Monitor View

- Move your mouse across the screen to display the Monitor Settings dialog box then click **Add Monitor**.

A new View is automatically added to the same monitor. In the Client software, the new View is added to the Site as a new monitor and can be controlled like the other Views displayed by the Virtual Matrix.


Removing a Monitor View

- Move your mouse across the screen to display the Monitor Settings dialog box then click **Close Monitor**.

The Monitor Settings dialog box is closed with the View and the monitor is removed from the Site.

Resizing a Monitor View

When the Virtual Matrix software is initially launched, the View on each monitor is displayed in fullscreen mode but you can restore down the View as needed.

- To maximize or restore down a View, move your mouse across the screen to display the title bar then click .



When the View is restored down, you can resize it to fit your needs by clicking and dragging any corner of the window.

Starting and Shutting Down the Virtual Matrix

Starting the Virtual Matrix

To start the Virtual Matrix software, repeat the procedure described in [Getting Started](#). By default, the application automatically logs back into the last Site it was connected to. If you are prompted to login, this is usually because the Site is offline.

If you need the Virtual Matrix to access a different Site, click **Change Site** in the Monitor Settings dialog box. For more information, see [Logging Into and Out of a Server](#).

Shutting Down the Virtual Matrix

To shut down the Virtual Matrix software, move your mouse across the screen to display the title bar then click **X** on any monitor. This will shut down the Virtual Matrix software on the system and close all monitor Views.



While the Virtual Matrix software is shut down, the monitors remain listed in the Avigilon Control Center Client software. Any changes made to the monitor display settings are applied when the Virtual Matrix software is next launched.

