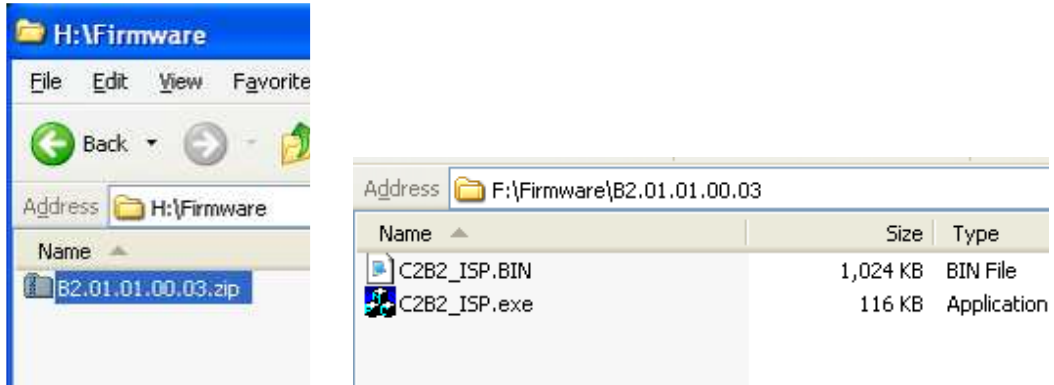


1. Download and extract the .ZIP file containing the latest firmware to a local folder on your PC

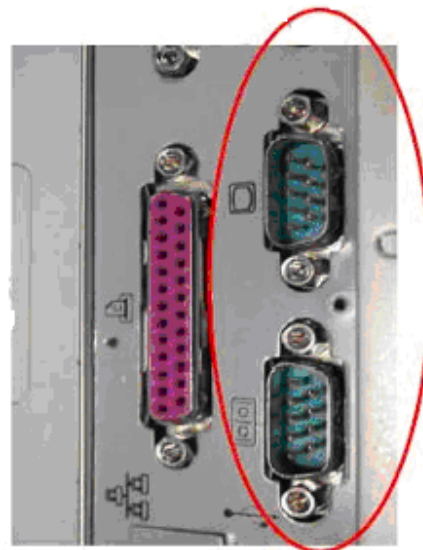


2. Connect the RS232 cable to your PC's desired COM port



Connect to PC Com Port

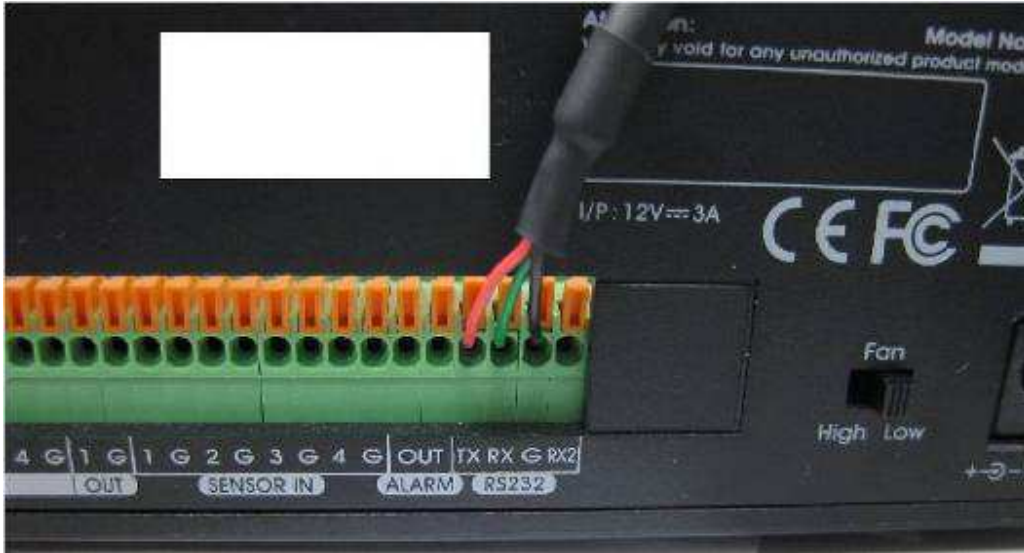
Connect to PC Com Port



Com ports of PC

3. Connect the 3 lines of the RS232 cable to the DVR unit as shown in the picture below

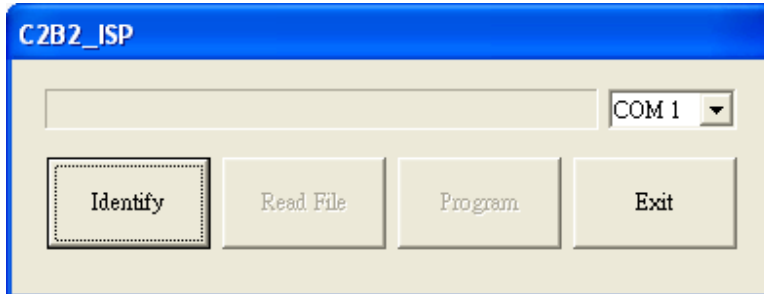
RED – TX
GREEN – RX
BLACK - G



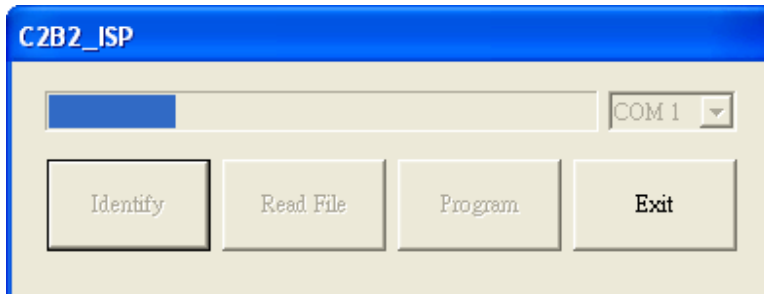
4. Power off the DVR unit by removing its power cord



5. Start the update program “C2B2_ISP.EXE” – the following window will appear – select the COM-port from the dropdown list



6. Click the button “Identify”



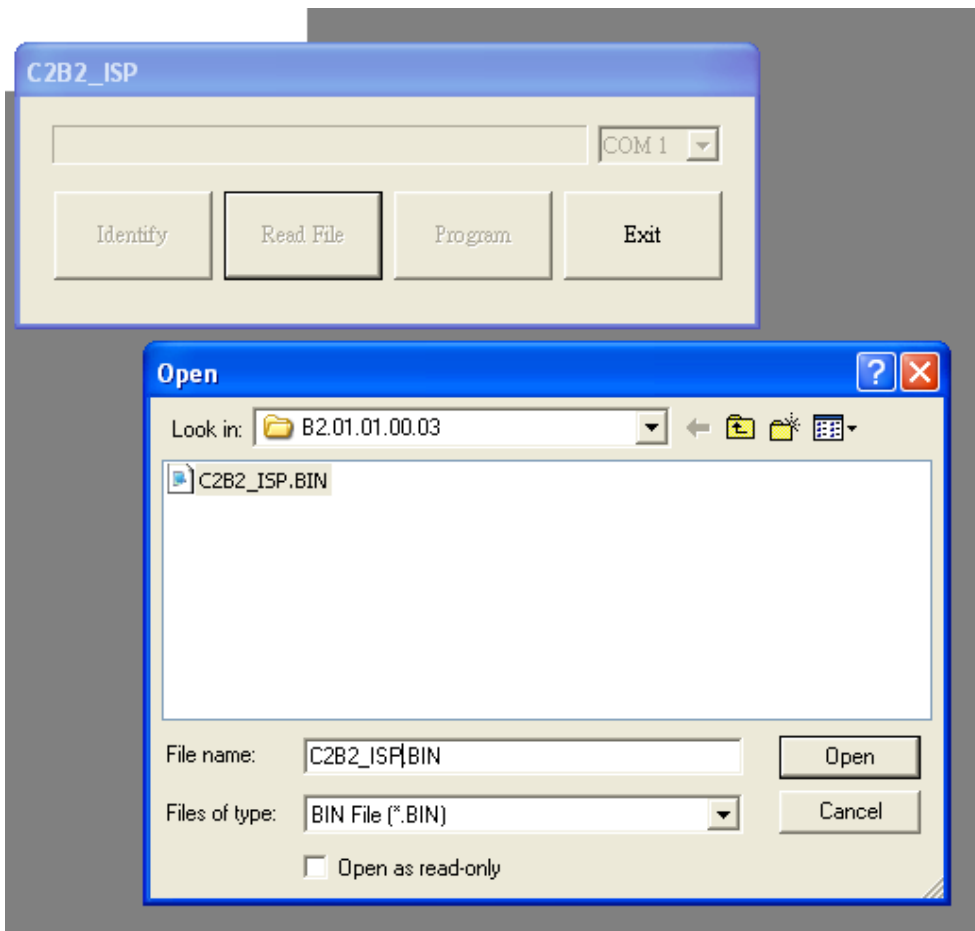
7. Power on the DVR unit by plugging in the power cord



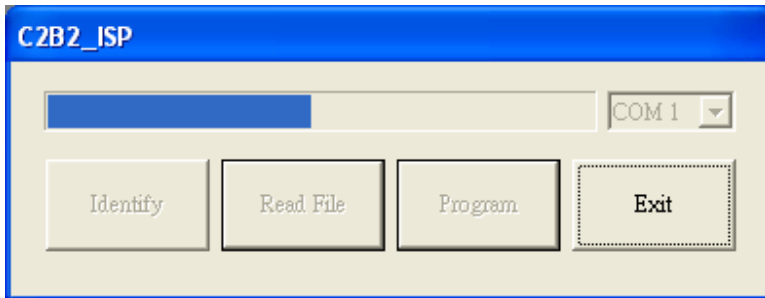
(The DVR will show the following screen and switch to FW upgrade mode)



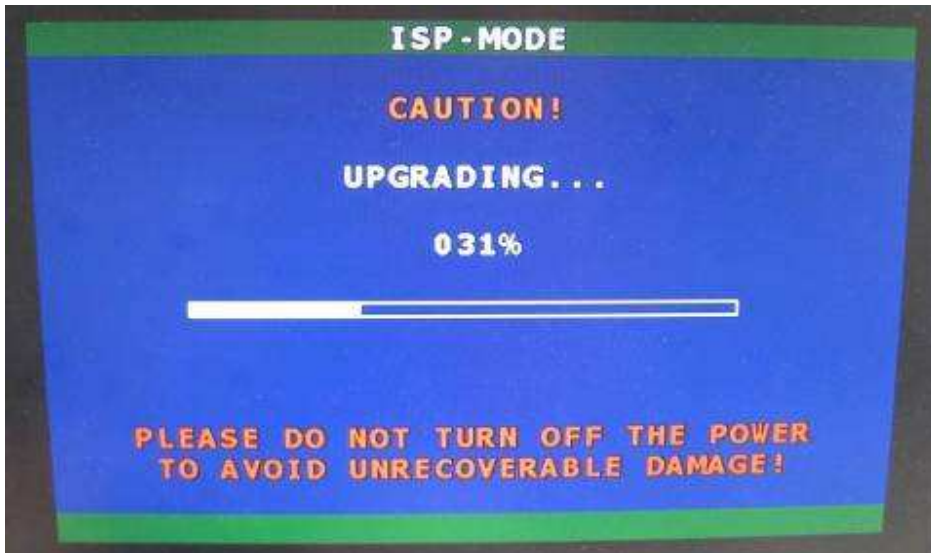
8. Click the button "Read File" and select the new firmware file



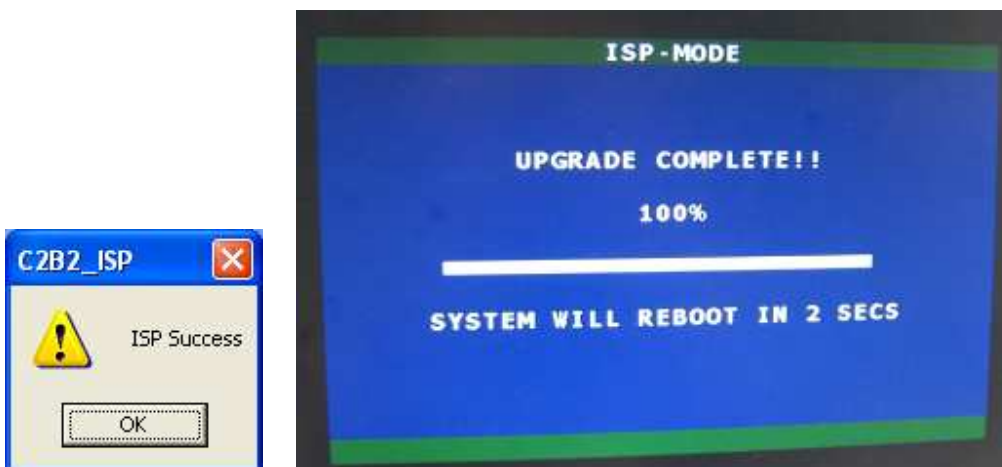
9. Click the button “Program” to initiate the update process



During the update process, the DVR will display the following screen – do not turn off your DVR, or interrupt the connection



10. After the update procedure is completed the following windows will appear on your PC and DVR



11. The DVR will reboot automatically and display the newly installed firmware version in the boot up self test



12. The FW update procedure has been completed
13. You may remove all the cables connected previously