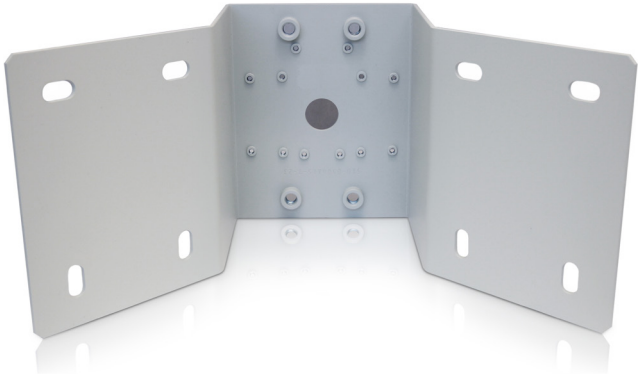


Corner Mounting Bracket



H4-MT-CRNR1

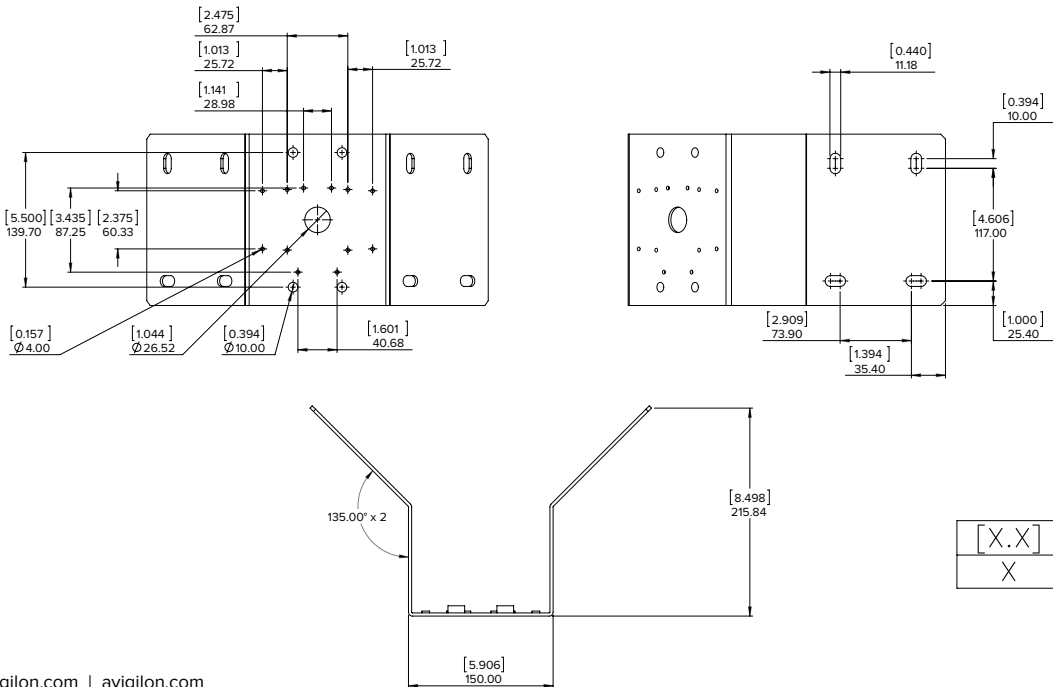
Aluminum corner mounting bracket for dome cameras using a pendant wall mount and bullet cameras.

Weight: 1.24 kg (2.73 lbs)

- Female inserts
- Compatible with:
 - Pendant Wall Mount (H4A-MT-WALL1) for H4A Pendant Dome Cameras
 - Pendant Wall Mount (CM-MT-WALL1) for H4 SL, H4 Fisheye, H4 PTZ and H3 Multisensor (H3-xMH-DP1-B) Dome Cameras
 - HD Bullet Cameras (H4A-BO-IR)
 - H4 SL Bullet Camera (H4SL-BO-IR)
 - HD Bullet Camera Junction Box (H4-BO-JBOX1)
 - H3 Bullet Camera Junction Box (H3-BO-JB)
 - H3 Pendant Wall Arm (MNT-PEND-WALL)
- 6”–20” Metal straps included
- Minimum pole diameter is 152.4 mm (6”)
- Maximum pole diameter is 508 mm (20”)
 - RAL 9003 Wall mounting hardware not included
- RAL 9003

Included components for Avigilon camera and accessories:

- 4 x Hex head bolts (3/8” – 16 x 1”)
- 4 x Lock washers (3/8”)
- 4 x Flat washers (3/8”)
- 4 x Hex head bolts (M4-0.7 x 30)
- 4 x Lock Washers (M4)
- 4 x Flat washers (M4)



SUPPORT asksales@avigilon.com | avigilon.com