

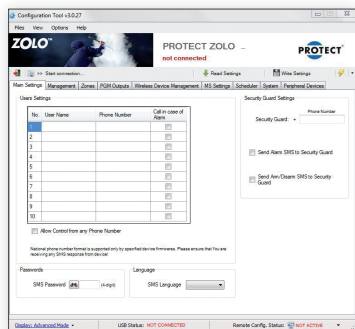
ZOLO™

This unique "stand-alone" alarm system controls a fog cannon wirelessly. Connect/disconnect with a phone or the remote control unit. Up to 10 users possible. Designed for homes, holiday houses, small businesses and mobile units.



Wireless security fog

Wireless security fog with alarm, sensor and remote control unit.



Up to 10 users

Control ZOLO with a phone. Add up to 10 telephone numbers in the easy-to-use configuration tool.



User-friendly alarm system

Manuals, installation video, software and more information is available on www.protectglobal.com.

Features:

- Complete "stand-alone", GSM-based alarm system - the first to control a fog cannon. Wireless connection between ZOLO (alarm system) and the fog cannon
- ZOLO is an extremely flexible, simple and effective way to secure the valuables. In case of burglary ZOLO notifies the user(s) via SMS text messages and/or phone calls that the alarm system and the fog cannon has been activated. Also, in case of faults the system notifies automatically
- Capable of being controlled with a remote control unit and up to 10 phone numbers (smartphone app, SMS text messages and even phone calls!)
- Add up to 10 users on the system. User administration via a PC or simple SMS text messages
- ZOLO is designed for complete alarm installations with fog cannon devices in e.g. homes, holiday houses, small businesses and in mobile units as for example building site containers, boats and caravans
- ZOLO is cheaper than a traditional burglar alarm, because it is generally not connected to a call-out scheme, and therefore has no fixed monthly expense. This can be purchased from dealers as an optional extra
- The total PROTECT range of fog cannon units can be controlled by ZOLO
- A verification sensor is included
- This solution requires a SIM card (not included)

Notice: Specifications on the reverse page



SECURED IN SECONDS

Specifications:



ZOLO GSM Security System device:

Communication: SMS, voice calls, GPRS network

Detection angle: 90° Dual Detector

Max. motion detection range: 10 m

Wireless communication range:

Up to 30 m in premises, up to 150 m in open areas

Wireless transmitter-receiver frequency: 868 Mhz

GSM modem frequency: 850/900/1800/1900 Mhz

Supply voltage: 11-15 V, 500 mA max

Backup battery voltage, capacity: 8.4 V, 250 mAh

Backup battery operating time: Up to 24 hours

Operating temperature range: -10 to +40 °C.

Maximum number of wireless devices: 16

Supported protocols:

Ademco Contact ID, EGR100, Kronos, Cortex SMS

SIM Card not included (must support 2G)

Power supply and USB cable included



ZOLO Communication Card:

Ensures wireless communication between fog cannon and ZOLO

The card is placed inside the fog cannon and connected to the PCB of the unit

The magnetic card makes the installation easy

The antenna is connected to the communication card



Antenna:

The antenna is connected to the ZOLO Communication Card inside the fog cannon

The antenna is placed on the outside of the fog cannon's metal cover

The antenna is magnetic which makes the installation easy



PIR-sensor:

Verifying sensor for the fog cannon

The sensor is connected with a wire to the PCB of the fog cannon

The sensor is mounted adjacent to the fog cannon. Ensure that the fog cannon does not cover the detection angel of the sensor

Detection angle: 90°

Max. motion detection range: 10 m



Remote control unit:

Quick and easy way to arm/disarm the ZOLO GSM Security System

Attractive and elegant design



SECURED IN SECONDS