

**AVerMedia<sup>®</sup>**

**AverDiGi EH5116 PRO**

**Quick Installation Guide**







**SPECIFICATIONS ARE SUBJECT TO CHANGE WITHOUT  
PRIOR NOTICE  
THE INFORMATION CONTAINED HEREIN IS TO BE  
CONSIDERED FOR REFERENCE ONLY**

---



**WARNING**

**TO REDUCE RISK OF FIRE OR ELECTRIC SHOCK. DO NOT  
EXPOSE THIS APPLIANCE TO RAIN OR MOISTURE  
WARRANTY VOID FOR ANY UNAUTHORIZED PRODUCT  
MODIFICATION**

---

**Copyright © 2008**

**AVerMedia INFORMATION, Inc**

**All rights reserved**

**Reproduction without permission is prohibited**



# Package Contents

(1)



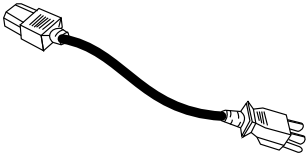
(2)



(3)



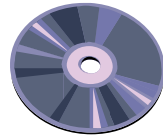
(4)



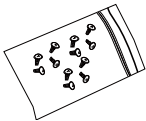
(5)



(6)



(7)



(8)



If there is any damage, shortage or inappropriate item in the package contents, please contact with local dealer

- 
- |                                                                                      |                                                                   |
|--------------------------------------------------------------------------------------|-------------------------------------------------------------------|
| (1) EH5116 PRO unit                                                                  | (5) Audio cable (16CH audio out, 1CH audio in, 1CH microphone in) |
| (2) Remote Control (Batteries are included)                                          | (6) Software CD (Manual is included)                              |
| (3) Quick Installation Guide                                                         | (7) 12 * screws for internal HDD installation                     |
| (4) Power Cord (*The power cord may vary according to the local electricity system.) | (8) SATA cable                                                    |

# Hardware Installation

## A. Install the hard disk

Follow the steps to install the hard disk:



For hard disk spec, please referring to <http://www.avermedia.com/AVerDiGi/Product/> → Embedded Hybrid DVR/NVR → AVerDiGi EH5116 → Hardware Recommendations

Follow the illustrated instructions below to install the hard disk:

1. Unlock the removable hard disk drawer
2. Open the removable hard disk drawer



3. And then, pull out the removable hard disk drawer
4. Remove the removable hard disk drawer cover



5. Carefully insert the hard disk in the removable rack



6. Turn the removable hard disk drawer over and screw hard disk with screws



7. And then, close the removable hard disk drawer cover



8. Slide the drawer back



9. Lock the removable hard disk drawer keylock



10. Power on the removable hard disk drawer



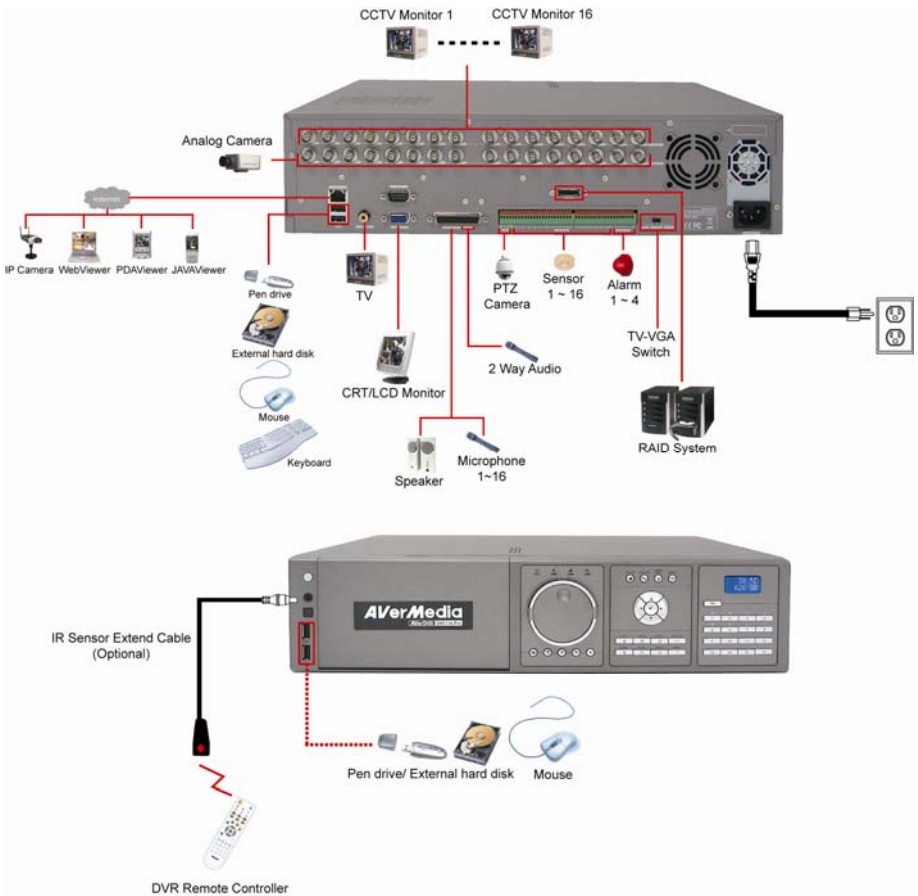
11. You may now connect all the cables and power on the DVR unit.

---

**i** Please make sure the power of removable hard disk is on before starting DVR unit to avoid hard disk detection error.

---

**B. After the hard disk installation, please connect the cables and power as the illustration showed**



- DVR unit can connect 16 cameras in analog and IP cameras combo.
- DVR unit doesn't supply the power to connected external device.
- Each time you change the video display output, the power must be turned **off** and switch the video display output, and then turn **on** the DVR unit.
- Pen drive and external hard disk must be FAT32 format.



# Using DVR System

## A · Way to Operate DVR

There are three ways can be managed the DVR unit:

### 1. Using mouse and keyboard

Connecting the mouse and keyboard through USB interface, user can easily to management the DVR unit. For the first time using DVR unit, mouse and keyboard is the best way to set up all DVR relevant configurations.

### 2. Using Remote Controller

After DVR unit has been setup, user can use remote control to preview, playback, backup, reset alarm, output video and so on functions.

### 3. Using Front Panel button

It's an optional way to operate DVR unit. Front panel button function acts as same as remote controller.



For the first time using DVR unit, using mouse and keyboard to setup all configurations.

---

## B · First Time Using DVR Unit

1. Connect the mouse and keyboard to DVR unit(through USB interface)
  2. Select the video output – VGA, TV-NTSC, or TV-PAL
- 



**VGA:** DVR output the video to a LCD monitor or a CRT monitor

**TV-NTSC:** DVR output the video to a TV and video system is NTSC

**TV-PAL:** DVR output the video to a TV and video system is PAL

---

3. Power on the DVR unit.
  4. For security purpose, the DVR system would require you to enter User ID and Password before it can be accessed. When the Authorization dialog box appears, select the ID (**superuser** or **user**) and enter the Password. (Superuser and user default password both are **111111**).
- 



**Superuser** has full authority to configure and operate DVR system.

---

After login, the main GUI as following shown:



5. The hard disk must be formatted before user can use it with DVR unit. Following the below steps to format the hard disk.
  - a. Click **Setup** and enter the password
  - b. Click **System** → **Add**
  - c. Select the hard disk from device list and select **Format type**
  - d. Click **Format** button to start formatting
  - e. When formatting is done, click **OK**.
6. Setup the date and time in order to have correct recording time and date. Following the below steps to setup date and time:
  - a. Click **Setup** and enter the password
  - b. Click **System**
  - c. In **Time** section, click **Setting** button of **System Time**.
  - d. Select the date and adjust the time, and then, click **OK**.
7. Connecting the camera.
  - **To connect analog camera:**
    - a. Plug the analog camera audio cable into DVR unit.
    - b. Click **Setup** and enter the password
    - c. Click **Camera**
    - d. Select camera channel and type of camera – Analog Camera
    - e. And then, enable the camera
    - f. Give a name of camera and enter shot description.
    - g. Adjust the bright, contrast, hue, and saturation of camera
    - h. Click **OK**

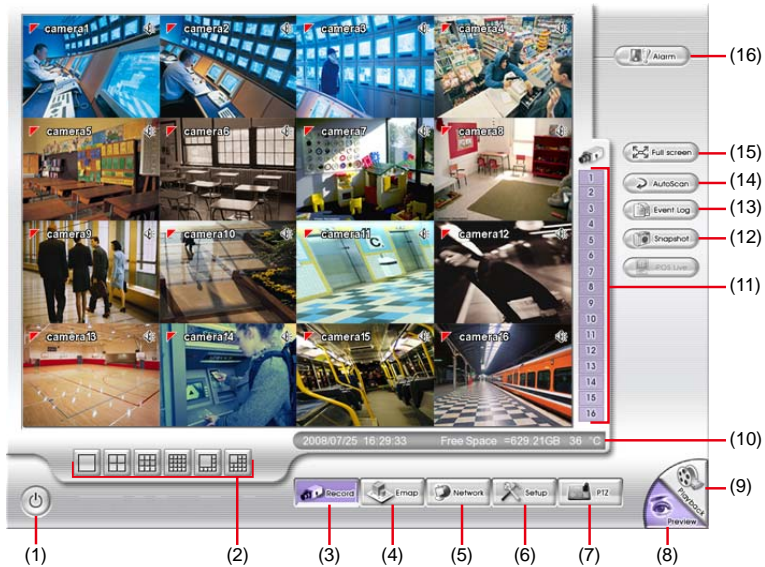
■ **To connect IP camera:**

- a. Click **Setup** and enter the password
- b. Click **Camera**
- c. Select camera channel and type of camera – IP Camera
- d. And then, enable the camera
- e. Click **IP Setting**
- f. Enable **Protocol**, and then, select **protocol, mode, video format, resolution**, and **channel** of IP camera.
- g. Enter **IP address** or **URL** of IP camera.
- h. Enter **ID** and **password** if IP camera's access authority is required.
- i. Click **OK**.



- DVR unit can connect 16 cameras in combination of analog and IP cameras.
  - DVR unit doesn't supply the power to connected external device.
- 
-

# Familiarizing the Buttons in Preview Mode



Name	Function
(1) Exit	<p><b>Reboot:</b> To restart the DVR system. It is required to enter the password</p> <p><b>Power Off:</b> To shut down the DVR system. It is required to enter the password</p> <p><b>Login:</b> Using different ID to login to DVR system.</p> <p><b>Cancel:</b> To return to DVR application.</p>
(2) Split Screen Mode	Select from 6 different split screen types to view all the camera, or one camera over the other or alongside on a single screen. It also allows you to switch and view different camera number.
(3) Record	Start/stop video recording.
(4) EMap	Display the map in each area, and the location of camera/ sensor/ relay and the warning.
(5) Network	Enable/disable remote system access. This feature allows you to access DVR server from a remote location via internet connection. The default is enabling.
(6) Setup	Configure the system settings.
(7) PTZ	Access PTZ control panel.
(8) Preview	Switch to Preview mode. This allows you to view live camera display.
(9) Playback	Switch to Playback mode. This allows you to view the recorded video file.

Name	Function
(10) Status bar	Display the current date, time, hard disk free space, and system temperature.
(11) Camera ID	Show the number of cameras that are being viewed. When you are in single screen mode, click the camera ID number to switch and view other camera.
(12) Snapshot	Capture and save the screen shot in *.jpg format.
(13) Event log	Show the record of activities that take place in the system.
(14) AutoScan	Start/Stop video screen cycle switch.
(15) Full screen	View in full screen. To return, press the right button of the mouse or <b>ESC</b> on the keyboard or click the arrow icon.

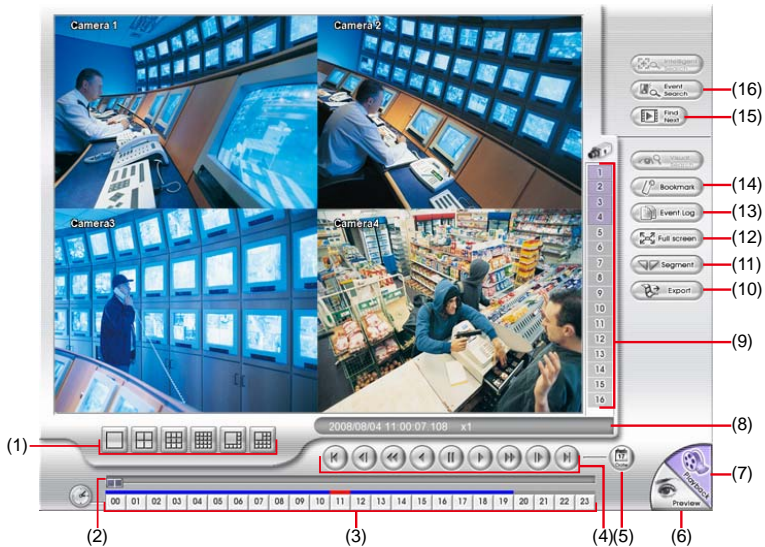


When you switch to full screen in multiple-screen mode, **Left** click to toggle to only display one of the video in the multiple-screen mode or all.




(16) Alarm	Alert and display warning info. Superuser and user both can reset alarm status.
------------	---------------------------------------------------------------------------------


## Familiarizing the Buttons in Playback Mode

To switch in Playback mode, click **Playback** button at the lower right corner of Preview mode user interface.



Name	Function
(1) Split Screen Mode	Select from 6 different split screen type to playback the recorded video file of all the camera, or one camera over the other or alongside on a single screen.
(2) Progress bar	Show the progress of the file being played. You may move the bar to seek at any location of the track.
(3) Hour Buttons	Select and click to playback the recorded video file on the specific time frame.
<p><b>i</b> The Hour buttons represent the time in 24-hour clock. The blue bar on top of the hour button indicates that there is a recorded video file on that period of time. While the red bar indicates that you are currently viewing the recorded video file.</p>	
(4) Playback Control Buttons	<p><b>Begin:</b> Move at the beginning of the recorded video file.</p> <p><b>Previous:</b> Go back to the previous frame.</p> <p><b>Slower:</b> Play the recorded video file at the speed of 1/2X, or 1/4X</p> <p><b>Rewind:</b> Wind back the recorded video file.</p> <p><b>Pause:</b> Briefly stop playing the recorded video file.</p> <p><b>Play:</b> Play the recorded video file.</p> <p><b>Faster:</b> Play the recorded video file at the speed of 2x, 4x, 8x, 16x, 32x, or 64x.</p>

Name	Function
(4) Playback	<b>Next:</b> Go to the next frame.
Control Buttons	<b>End:</b> Go to the end of the recorded video file.
(5) Date	Select the date on the calendar and the time from 00 to 23 to where to start playing the recorded video file.
	The numbers from 00 to 23 represent the time in 24-hour clock. The numbers from 01 to 16 represent the camera ID. The blue colored column indicates that there is a recorded video file on that period of time. While the red colored column indicates on where to start playing the recorded video file.
(6) Preview	Switch to Preview mode.
(7) Playback	Switch to Playback mode to view the recorded video file.
(8) Status bar	Display the recorded date, time and play speed.
(9) Camera ID	Show the number of cameras that are being viewed. When you are in single screen mode, click the camera ID number to switch and view other camera.
(10) Export	Export includes Snapshot, Output Video Clip, and Backup function. <ul style="list-style-type: none"> <li>■ <b>Snapshot:</b> Capture and save the screen shot either in *.jpg format.</li> <li>■ <b>Output Video Clip:</b> Save the segmented file in *.dvr format to external USB storage device.</li> <li>■ <b>Backup:</b> Save the playback file to USB device or DVD-ROM disk</li> </ul>
(11) Segment	Keep a portion of the recorded video. <ol style="list-style-type: none"> <li>1. Use the Playback Control buttons or drag the bar on the playback progress bar and pause on where you want to start the cut. Then, click <b>Segment</b> to set the begin mark.</li> </ol>  <ol style="list-style-type: none"> <li>2. Use the Playback Control buttons or drag the bar on the playback progress bar and pause on where you want to end the cut. Then, click <b>Segment</b> to set the end mark. To cancel segmentation or set the segment marks from the start, click <b>Segment</b> button again.</li> </ol>  <ol style="list-style-type: none"> <li>3. Click <b>Export</b> button → <b>Output Video Clip</b> to save the video segment to the USB storage device.</li> </ol>

Name	Function
(12) Full screen	View in full screen. To return, press the right button of the mouse or <b>ESC</b> on the keyboard or click the arrow icon.
	
	When you switch to full screen in multiple-screen mode, <b>Left</b> click to toggle to only display one of the video in the multiple-screen mode or all.
(13) Event log	Show the record of activities that take place in the system. To filter the records, select and click the option button to only display Event, System, Operation, Network or All.
(14) Bookmark	<p>Mark a reference point when reviewing the recorded video file to which you may return for later reference.</p> <ol style="list-style-type: none"> <li>1. Click <b>Bookmark</b>. button</li> <li>2. In the Bookmark dialog box, you may do the following: <ul style="list-style-type: none"> <li>- <b>Add</b> to create the new reference mark in the bookmark list.</li> <li>- <b>Edit</b> to change the mark description.</li> <li>- <b>Delete</b> to remove the selected reference mark in the list.</li> <li>- <b>Delete All</b> to remove all the reference marks in the list.</li> <li>- <b>Exit</b> to close Bookmark dialog box.</li> </ul> </li> <li>3. Select and click one in the bookmark list to review the file.</li> </ol>
(15) Find Next	Search for the next event or changes in the motion detector frame. You can use this when you are using Event Search function.
(16) Event Search	Search from the recorded activities that were recorded in event log (i.e., Sensor, Motion, Video Loss).