



**OPTIONAL
MEMORY
BOARD**

**Future features
coming soon:**

Serial interface for
integration into home
automation system.



KRV78/B



KRV78/W

**VIDEOPHONES WITH
MEMORY BOARD FACILITY**

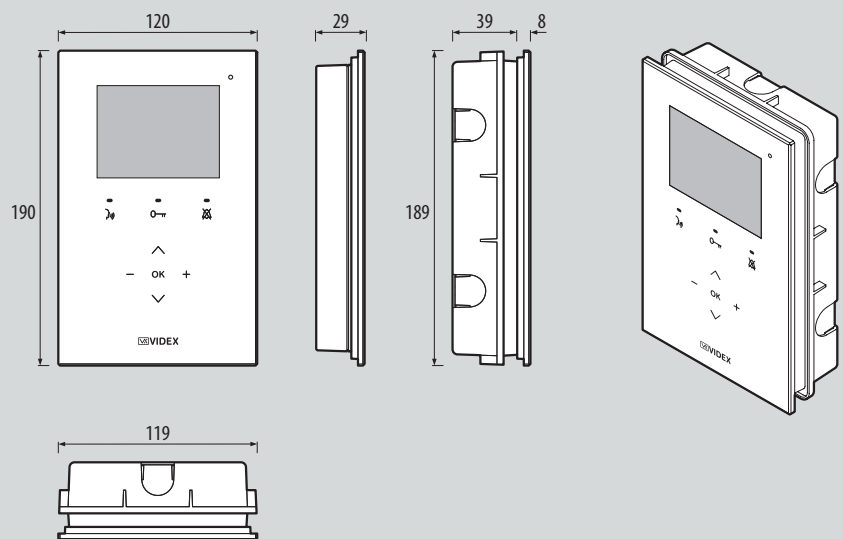
KRISTALLO videophones with me-
memory board can store up to:

- 128 still pictures**
- 66 videos (15 sec each video no audio)**

Manual or automatic record

Both videos and pictures are stored
with the corresponding recording date
and time

It is possible to copy the pictures and
videos on a microSD board



VIDEO

VIDEOMONITORS FOR VX2200 DIGITAL SYSTEM

ACCESSORY

KRV78/B



KRV76/B



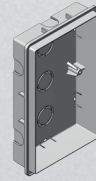
KRV78/W



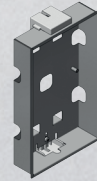
KRV76/W



KRV981



KRV983



KRV931



KRV78 Flush mount hands free videomonitor using 3.5" full colour active matrix LCD display with OSD (On Screen Display) for video door entry systems using composite (coax cable) or balanced (twisted pair) video signal. All buttons use capacitive touch sensor technology, 3 of these buttons have multiple direct functions such as "door-open/concierge-call", "answer/camera recall/simplex conversation" and "privacy/call reject/service/programming and adjustment menu access". 3 LEDs give visual indication of operations while the other 5 buttons allow navigation of the programming menu's.
 Programmable options: loudspeaker volume, call tone volume, picture contrast, brightness and hue, privacy duration, call tone melody, number of rings, address and video mode. Also includes a local bell function.
 Available in black (add to the product code "/B") or white (add to the product code "/W") finishes.

To order videophones with memory board facility (for those models where it is available), suffix "/MV" to the product code.

KRV76 As Art. KRV78 but surface mount version with telephone handset.

KRV981 Wall flush mounting box for Kristallo® Series videointercoms flush mounting version.

KRV983 Dry line wall flush mounting box for Kristallo® Series videointercoms flush mounting version.

KRV931 Table top desk kit for surface mounting version videointercoms Kristallo® Series.
 Dimensions: 116 X 183 X 145 mm.
 Connection cables included.

AUDIO

INTERCOMS FOR VX2200 DIGITAL SYSTEM

ACCESSORY

KRA78/B



KRA76/B



KRA78/W



KRA76/W



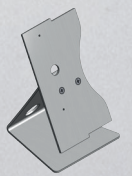
KRA981



KRA983



KRA038



KRA78 Flush mount hands free audio intercom. All buttons use capacitive touch sensor technology, 4 of these buttons have multiple direct functions such as "answer/end conversation/recall/simplex conversation", "door open", "privacy/call reject/programming menu access" (programmable duration) and "service" button. 3 LEDs give visual indication of operations while the other 5 buttons allow navigation of the programming menu's and the setting of volumes.
 It is possible to program the melody (9 available), the number of rings (max 9) and the privacy service duration (max 20 hours). Also includes a local bell function.
 Available in black (add to the product code "/B") or white (add to the product code "/W") finishes.

KRA76 As Art. KRA78 but surface mount version with telephone handset.

KRA981 Wall flush mounting box for Kristallo® Series intercoms flush mounting version.

KRA983 Dry line wall flush mounting box for Kristallo® Series intercoms flush mounting version.

KRA038 Table top desk kit for surface mounting version intercoms Kristallo® Series.
 Dimensions: 116 X 183 X 120 mm.
 Connection cables included.



Kristallo®



*Touch
Sensitive
Technology
by*

VIDEX®



Kristallo®



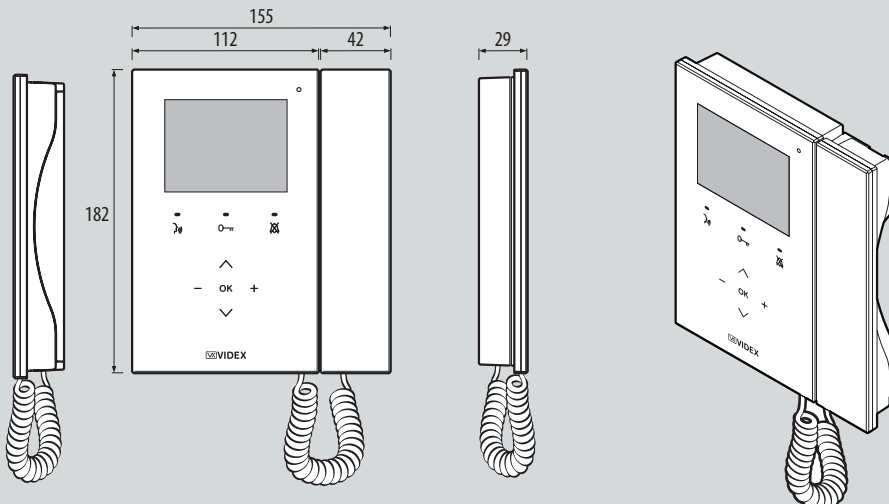
OPTIONAL
MEMORY
BOARD



KRV76/B



KRV76/W



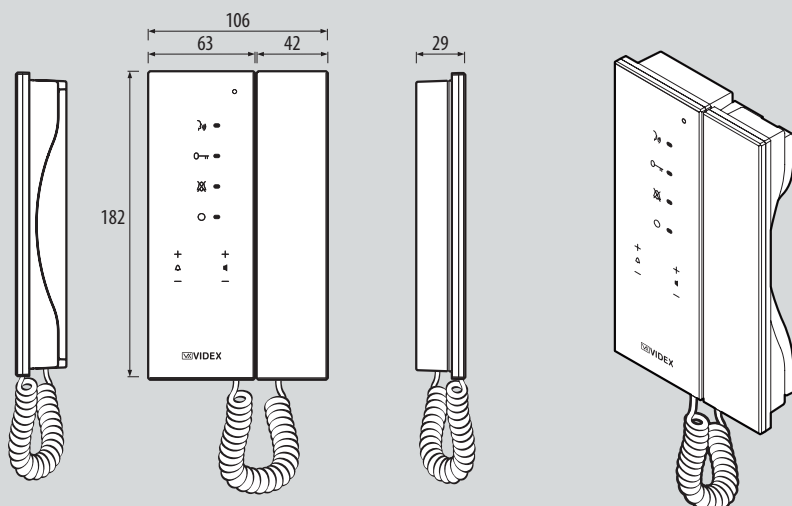
HANDS FREE INTERCO



KRA76/B



KRA76/W



MS & VIDEOMONITORS



All models are available in white and black finishes.



KRA78/B



KRA78/W

KEY



Controls utilise touch sensitive technology providing an elegant yet function feel.



3.5" TFT Colour Screen



OSD (On Screen Display) for user information and programming menus



Flush option with hands free speech and surface option with both hands free speech and handset available



Programmable timed privacy facility



Service Button (second gate, stair light etc.)



Integral temperature sensor.



Integral real time clock



Memory board (optional)

