

BRACKETS AND ADAPTERS FOR PAN & TILT MOTORS

PTAC WALL MOUNT BRACKET

Made of aluminum

Load rating: 35kg (77lb)

Unit weight: 0.7kg (1,5lb)

WFWBTA PARAPET BRACKET

Made of aluminum

Load rating: 50kg (110lb)

Height: 185mm (7.3in)

Unit weight: 0.8kg (1.7lb)

PTCC1 POLE MOUNT ADAPTOR

Made of aluminum

For pole diameters: 80÷150mm (3÷5.9in)

Load rating: 50kg (110lb)

Unit weight: 2.6kg (5.7lb)

WCWA CORNER MOUNT ADAPTOR

Made of steel

Load rating: 30kg (66lb)

WSFPA POLE MOUNT ADAPTOR

Made of aluminum

It allows the internal cable management

Load rating: 30kg (66lb)

For pole diameters: 65÷110mm (2.6÷4.3in)

Unit weight: 0.9kg

WCWGC CORNER MOUNT ADAPTOR

Made of steel

Load rating: 50kg (110lb)

Unit weight: 2.2kg (4.8lb)

WCPA REINFORCING SUPPORT PLATE FOR POOR CONSISTENCY WALLS

Made of aluminum

Available with a supporting box with internal cable channel (WBOV3A2)

Load rating: 50kg (110lb)

Unit weight: 0.6kg (1.3lb)



PTAC



WFWBTA



PTCC1



WCWA



WSFPA



WCWGC



WCPA

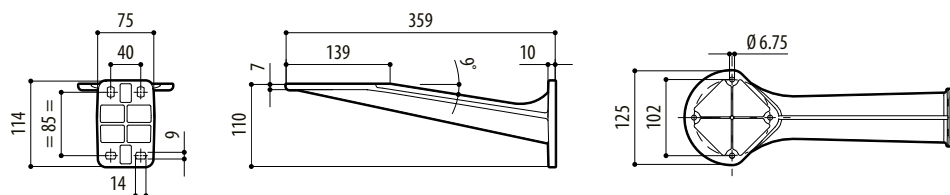
COMPATIBILITY BRACKETS/ADAPTERS		
	Brackets for P&T motors	
	PTAC	PTAC + WCPA
Pole mount adaptor		
WSFPA	✓	–
PTCC1	–	✓
Corner mount adaptor		
WCWA	✓	–
WCWGC	–	✓
Support plate adaptor		
WCPA	✓	–

PACKAGE			
Model Number	Weight	Dimensions (WxHxL)	Master carton
PTAC	0.9kg	13.5x13.5x45cm (5x5x18in)	10
WFWBTA	1kg (2.2lb)	14.3x15x27cm (5.5x6x11in)	15
PTCC1	2.8kg (6.2lb)	14x25.5x20cm (5.5x10x7.9in)	8

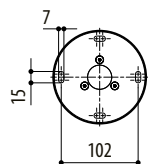
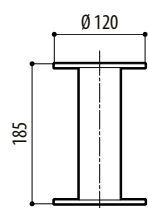
PACKAGE			
Model Number	Weight	Dimensions (WxHxL)	Master carton
WCWA	1.1kg (2.2lb)	14.5x15x27cm (6x6x11in)	15
WSFPA	1kg (2.2lb)	10x16x23cm (4x6x9in)	15
WCWGC	2.6kg (5.7lb)	24x32x24.5cm (9.4x12.6x9.6in)	8
WCPA	0.7kg (1,5lb)	10x16x23cm (4x6x9in)	30

TECHNICAL DRAWINGS

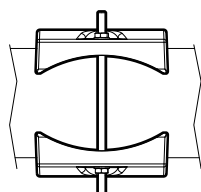
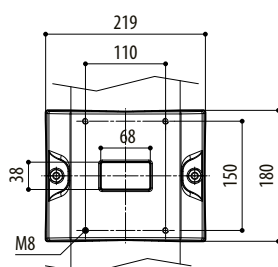
Sizes in millimeters.



PTAC



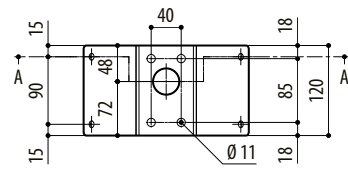
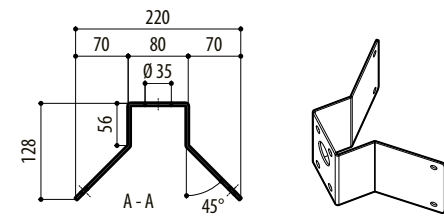
WFWBTA



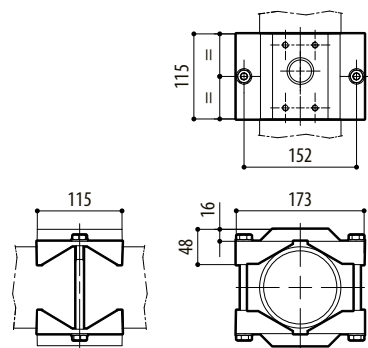
PTCC1

TECHNICAL DRAWINGS

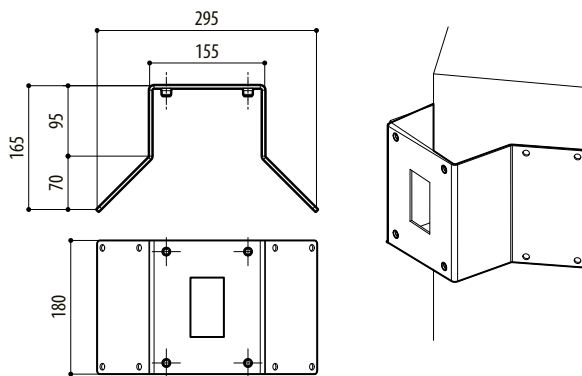
Sizes in millimeters.



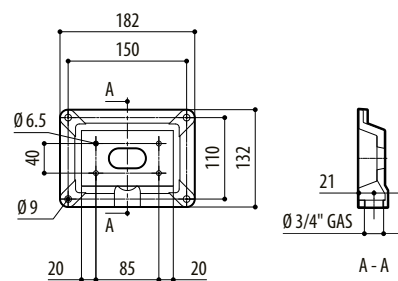
WCWA



WSFPA



WCWGC



WCPA

